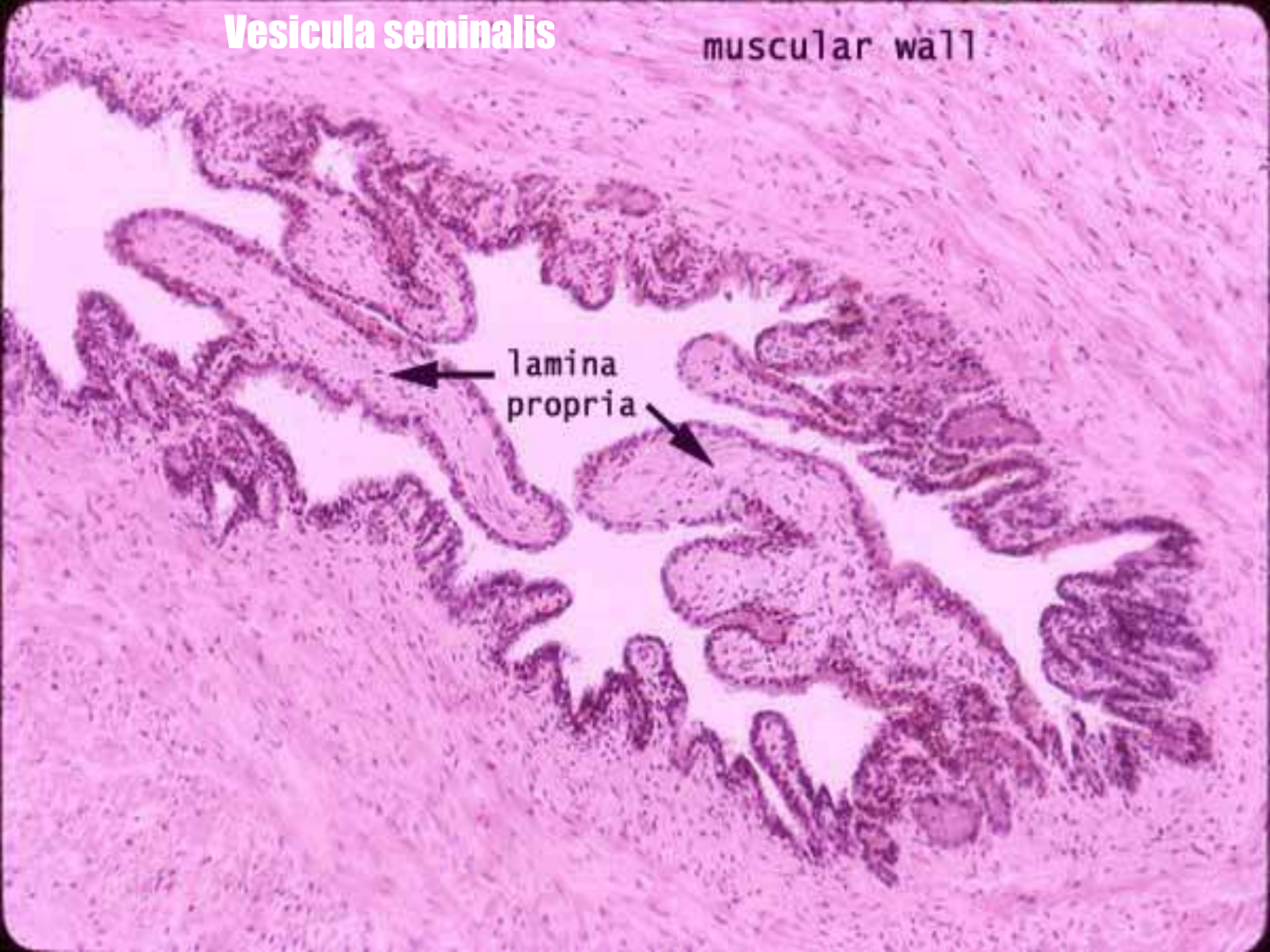


Vesicula seminalis

muscular wall

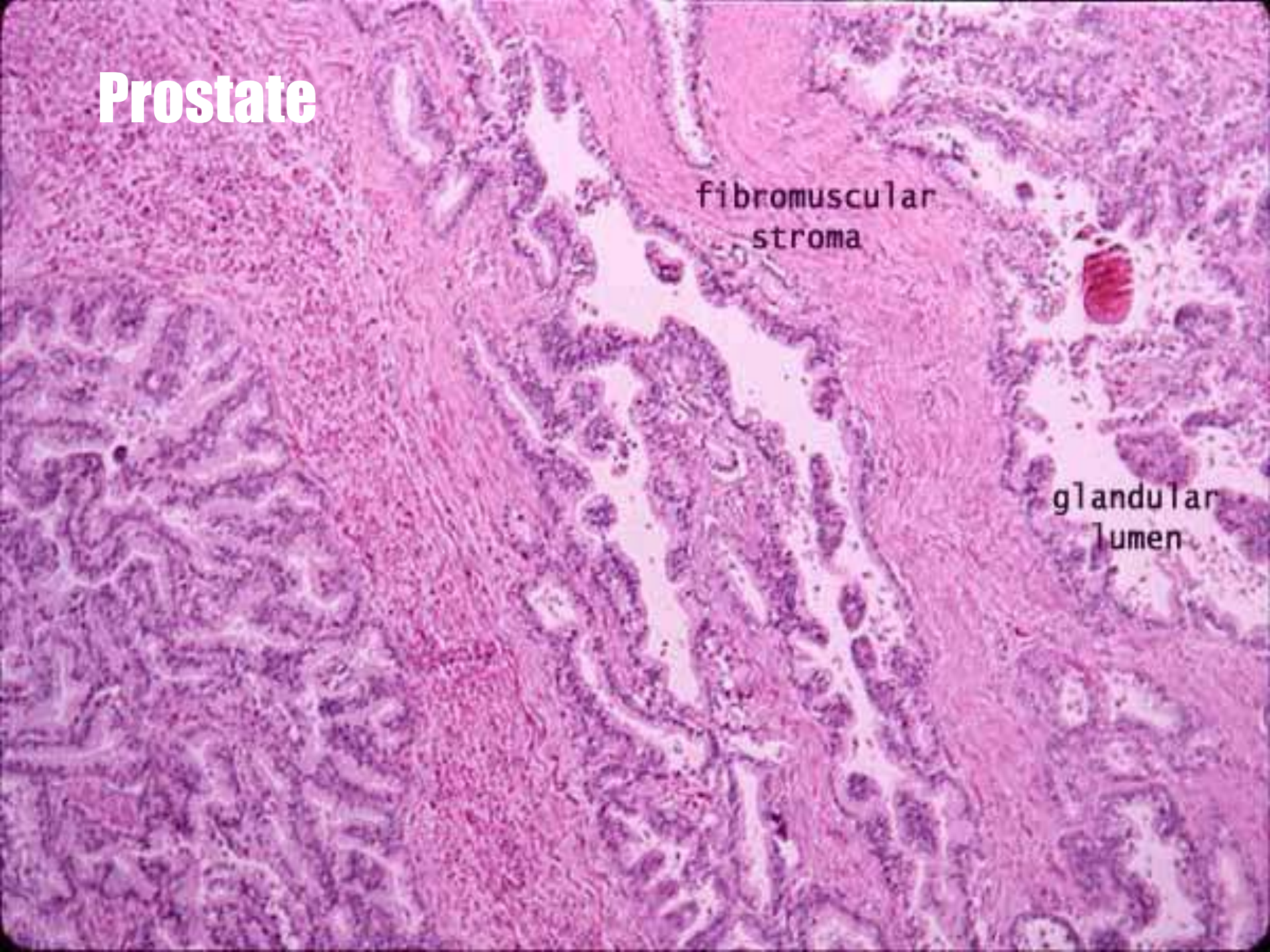
← lamina
propria →



Prostate

fibromuscular
stroma

glandular
lumen

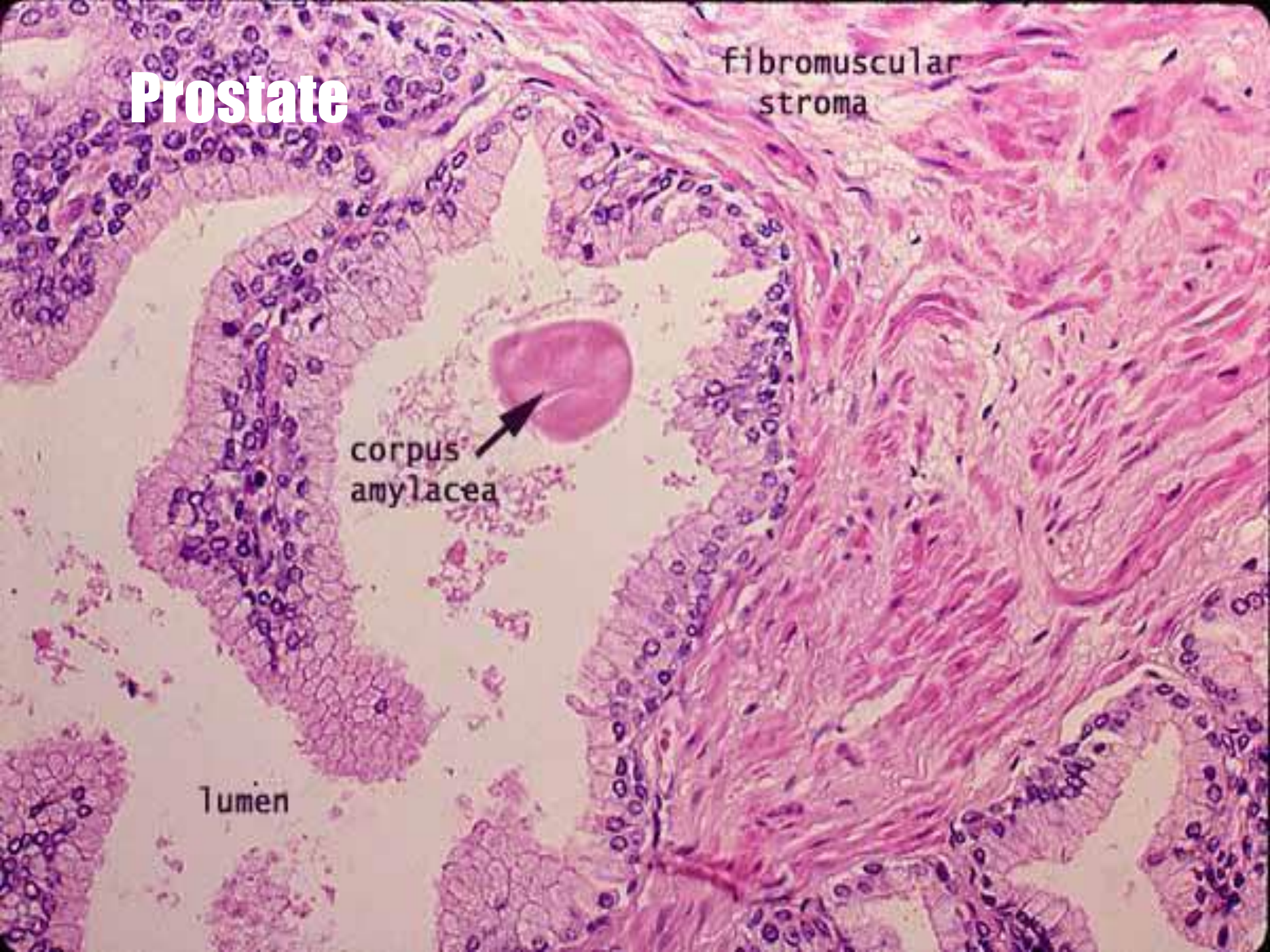


Prostate

fibromuscular
stroma

corpus
amylacea

Tumen

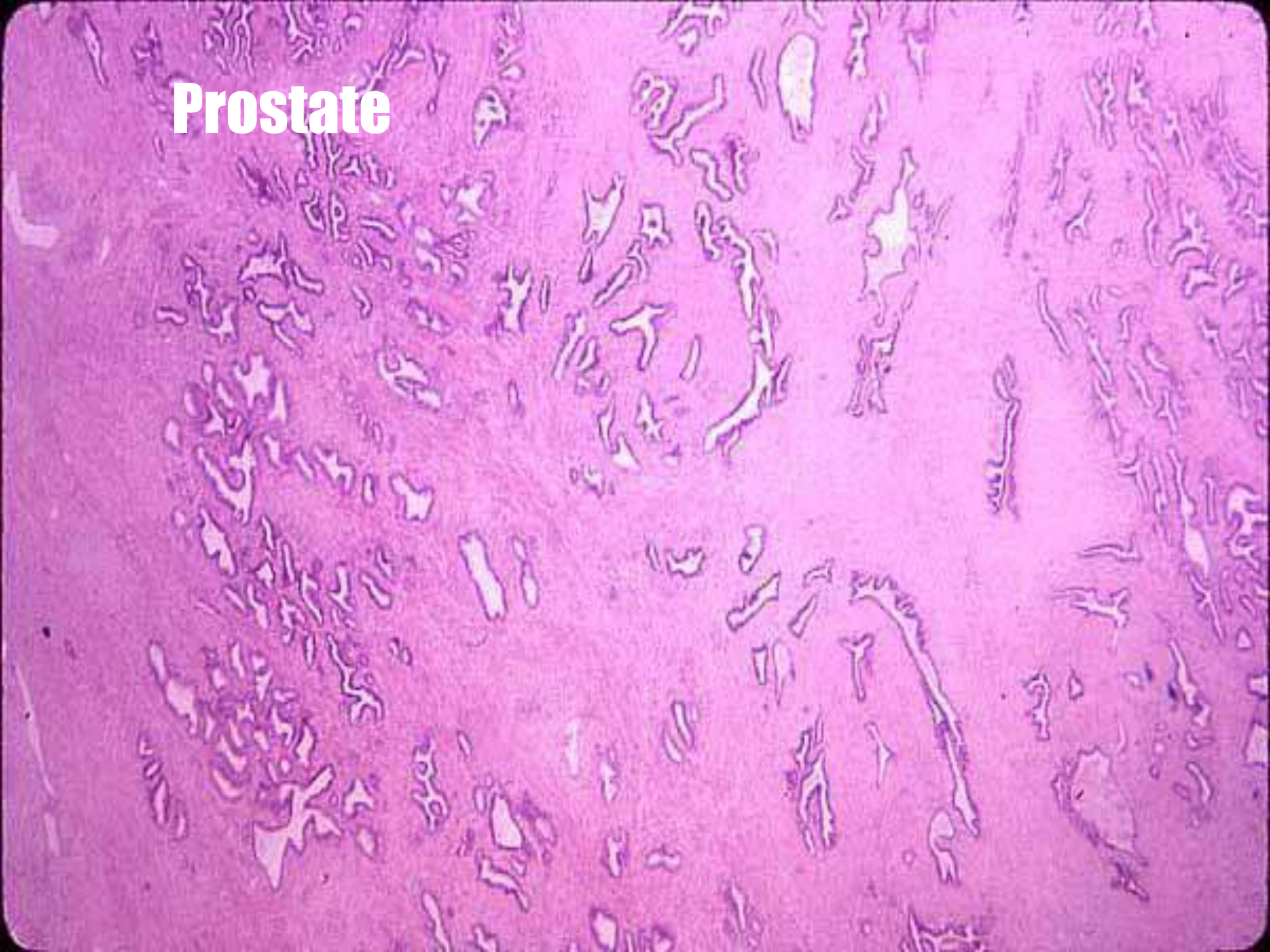


Prostate

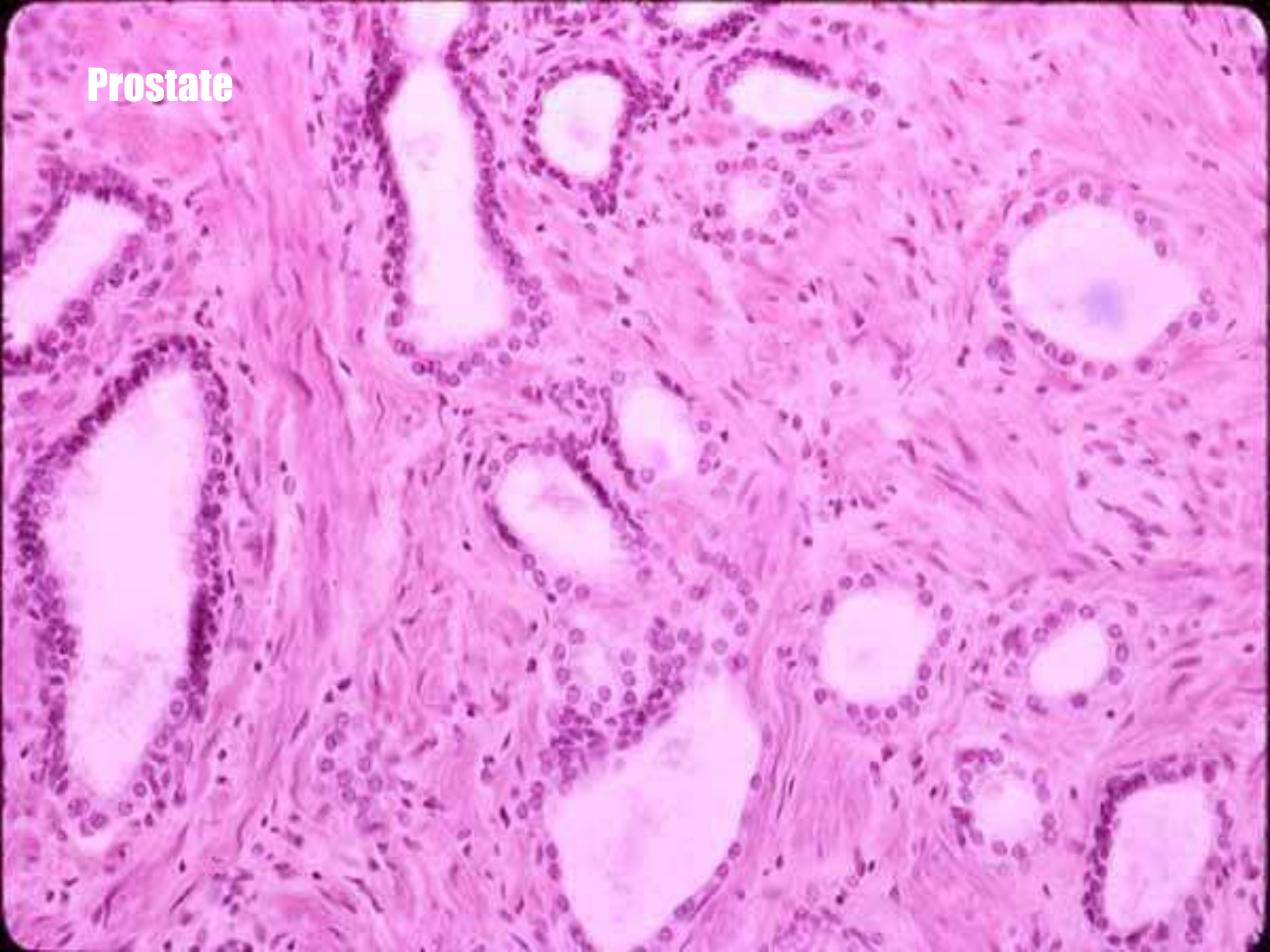
A histological micrograph of prostate tissue stained with hematoxylin and eosin (H&E). The image displays several glandular units, each consisting of a central lumen surrounded by a single layer of columnar epithelial cells. The nuclei of these cells are stained dark purple, while the cytoplasm and surrounding connective tissue are stained pink. The glandular units are separated by a dense, fibromuscular stroma, which is composed of bundles of smooth muscle fibers and fibrous connective tissue. A prominent feature is a large, circular, eosinophilic (pink) structure in the upper right quadrant, which appears to be a cross-section of a blood vessel or a duct. The overall architecture is characteristic of the prostate gland.

fibromuscular stroma

Prostate



Prostate

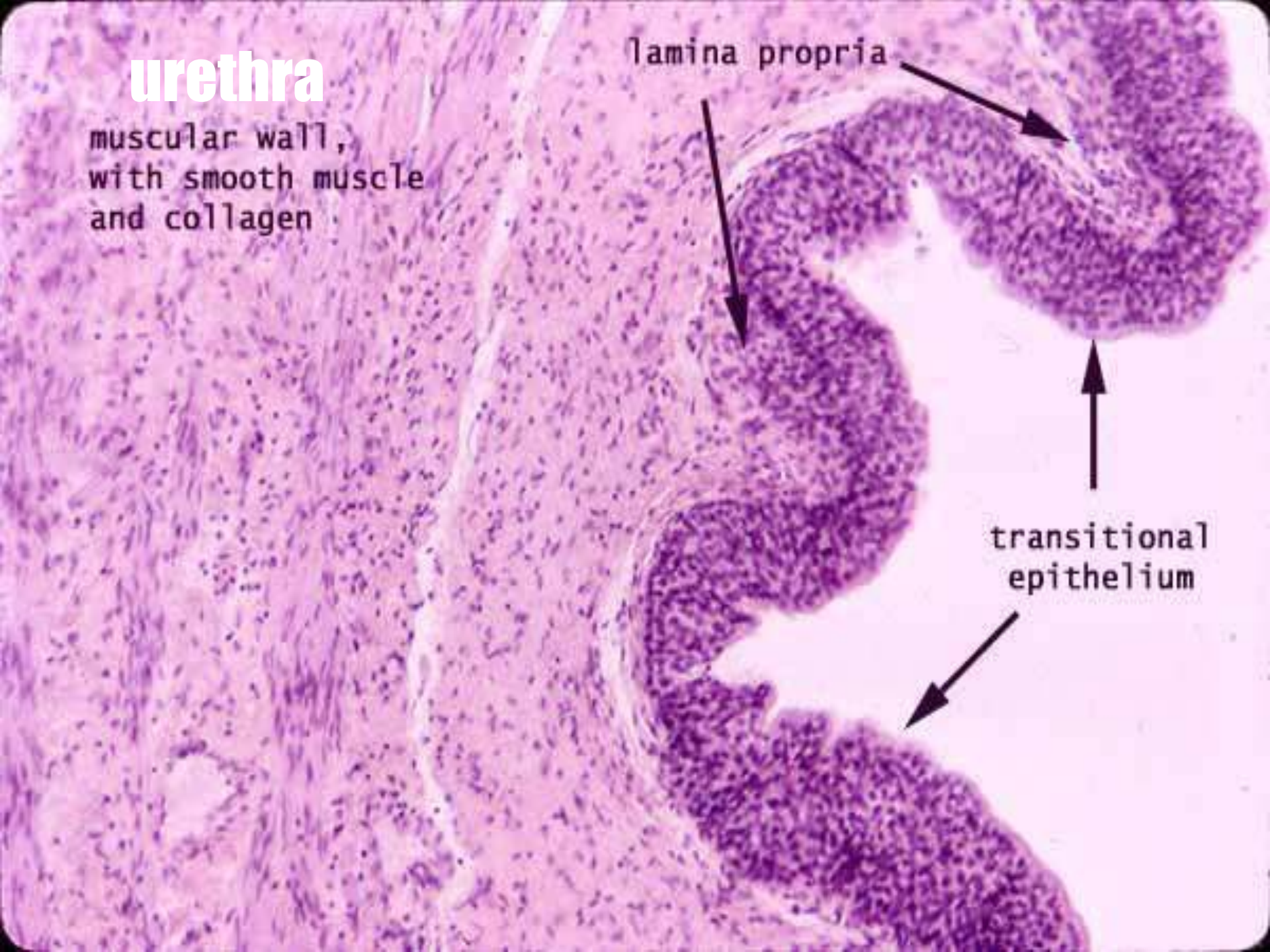


urethra

muscular wall,
with smooth muscle
and collagen

lamina propria

transitional
epithelium



wasSalam