

C A B G



Jarang di fase akut



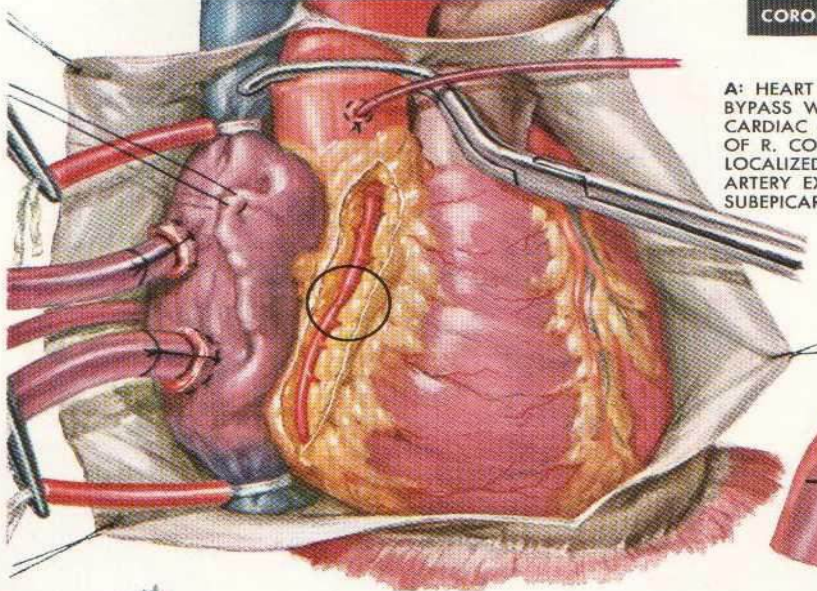
Bila PTCA gagal → oklusi total A. koronaria



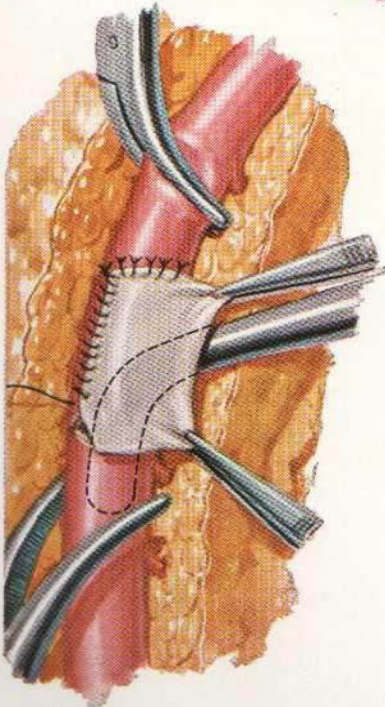
Bersamaan operasi VSD (ruptur)

Mitral insufisiensi (papillary)

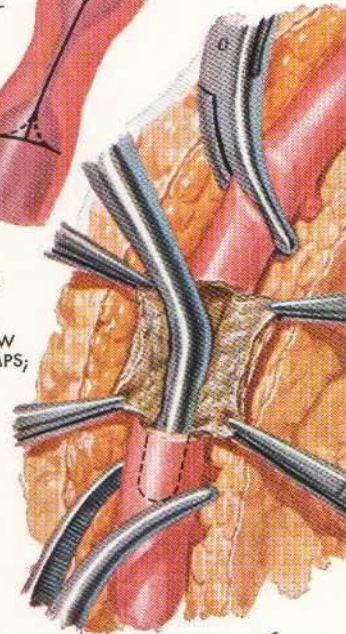
CORONARY ARTERIOTOMY



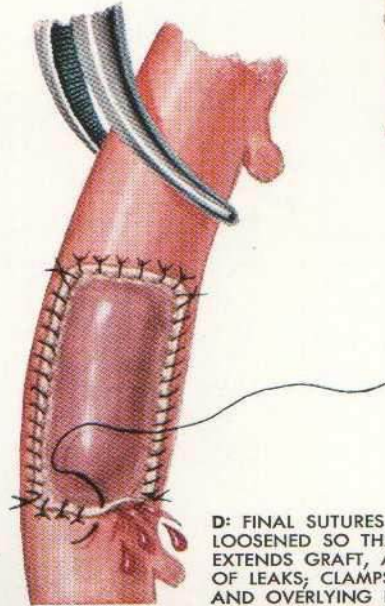
A: HEART EXPOSED; PATIENT ON TOTAL BYPASS WITH HYPOTHERMIA AND CARDIAC ARREST; ZONE OF NARROWING OF R. CORONARY ARTERY PREOPERATIVELY LOCALIZED BY CORONARY ARTERIOGRAPHY; ARTERY EXPOSED BY INCISING OVERLYING SUBEPICARDIAL FAT



B: FIELD MAGNIFIED BY LOUPE OR OPERATING MICROSCOPE; "I"-SHAPED ARTERIOTOMY EXTENDING ABOVE AND BELOW CONSTRICTION BETWEEN CLAMPS; DILATOR INTRODUCED ABOVE AND BELOW CONSTRICTION, LOOSENING EACH CLAMP IN TURN



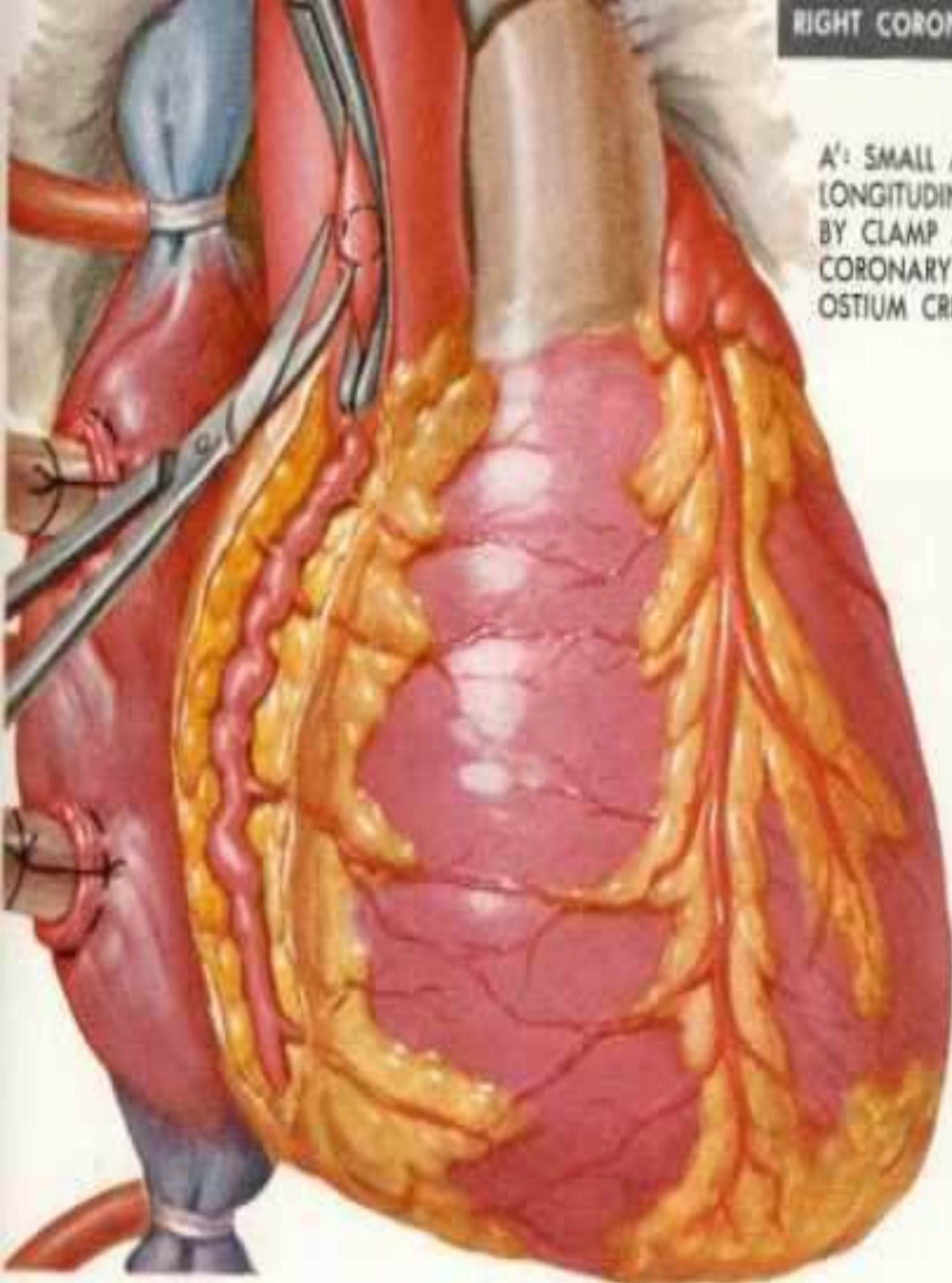
C: PATCH OF PERICARDIUM APPLIED WITH DILATOR IN PLACE; FINE SILK INTERRUPTED STITCHES AT UPPER AND LOWER ENDS AND CONTINUOUS SUTURE AT SIDES



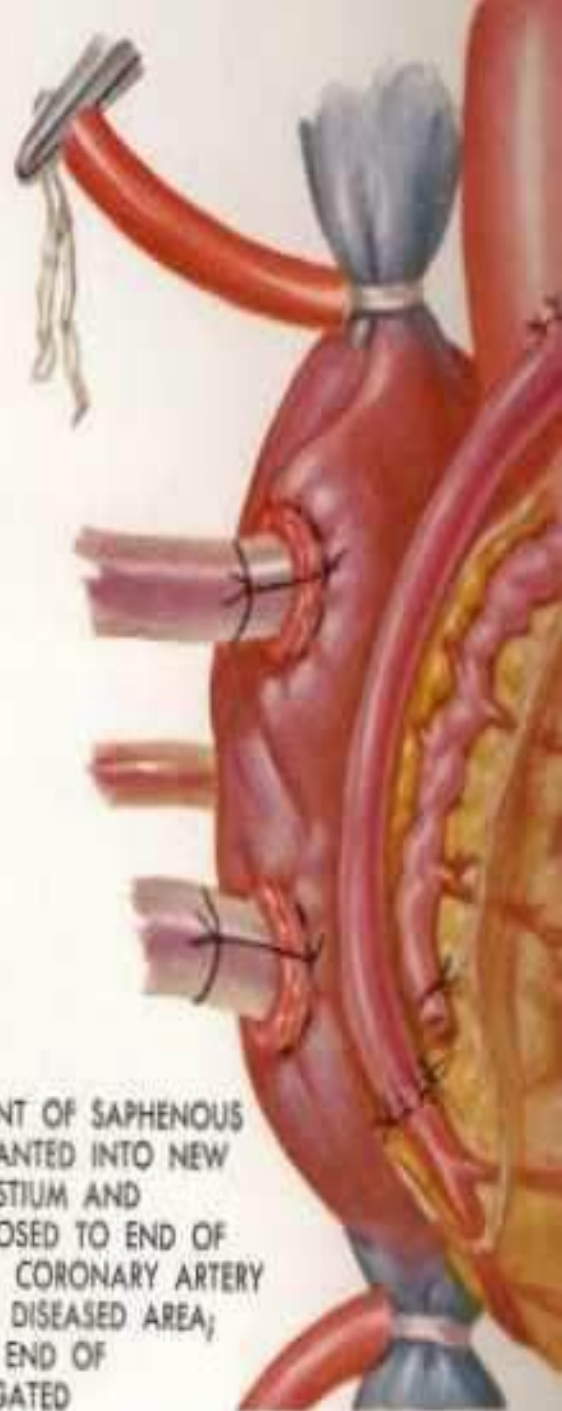
D: FINAL SUTURES APPLIED WITH UPPER CLAMP LOOSENED SO THAT BLOOD FLOW EXPELS AIR, EXTENDS GRAFT, AND PERMITS DETECTION OF LEAKS; CLAMPS ARE THEN REMOVED AND OVERLYING FAT APPROXIMATED

F. Netter M.D.
© CIBA

RIGHT CORONARY-ARTERY BYPASS



A': SMALL AREA OF AORTA LONGITUDINALLY ISOLATED BY CLAMP ABOVE RIGHT CORONARY ORIFICE, AND OSTIUM CREATED THEREIN



B': SEGMENT OF SAPHENOUS VEIN IMPLANTED INTO NEW AORTIC OSTIUM AND ANASTOMOSED TO END OF DIVIDED R. CORONARY ARTERY DISTAL TO DISEASED AREA; PROXIMAL END OF ARTERY LIGATED

**Are you hungry
or
sleepy ????
Sciences**



REKOMENDASI

Pasien

- Keluhan chest pain
- Diagnosis cepat tepat
- Hilangkan nyeri
- Resusitasi
- CVCU → tenaga terlatih

Dokter Umum

- Defibrilator, trombolitik
- Tindakan emergensi
- Perawatan pasca RS / rehabilitasi

Tenaga Kesehatan

- Terlatih : BCLS - ACLS
- Koordinasi ambulans

Kardiologis

- Diagnosis terapi
- Prog. pemeriksaan
- Penetapan rehabilitasi
- Koordinator :
 - Dokter ahli
 - Tenaga medis
 - Pasien

PENUTUP

- ◆ Insiden dan mortalitas IMA meningkat
- ◆ Perlu organisasi yg mantap, diagnosa dan penatalaksanaan intensif
- ◆ Kematian 3 jam I : aritmia
- ◆ Komplikasi : aritmia, gagal jantung, syok kardiogenik, tromboemboli
- ◆ Prinsip penatalaksanaan
- ◆ Rehabilitasi dan stop faktor resiko



Terimakasih

