

EXTRIMITAS CAUDALIS

Dr. Thontowi Djauhari NS, MKes
Fakultas Kedokteran
Universitas Muhammadiyah Malang

Doa belajar

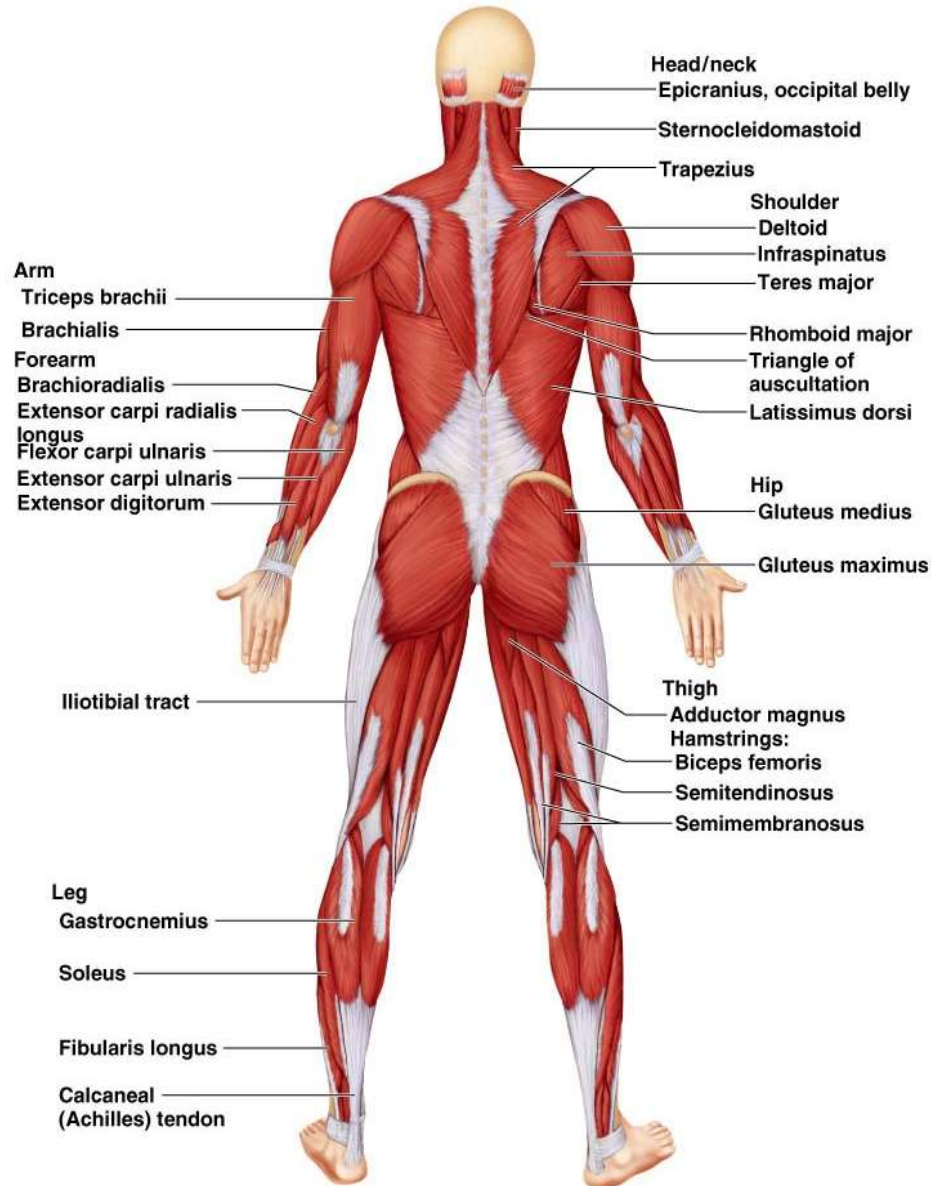
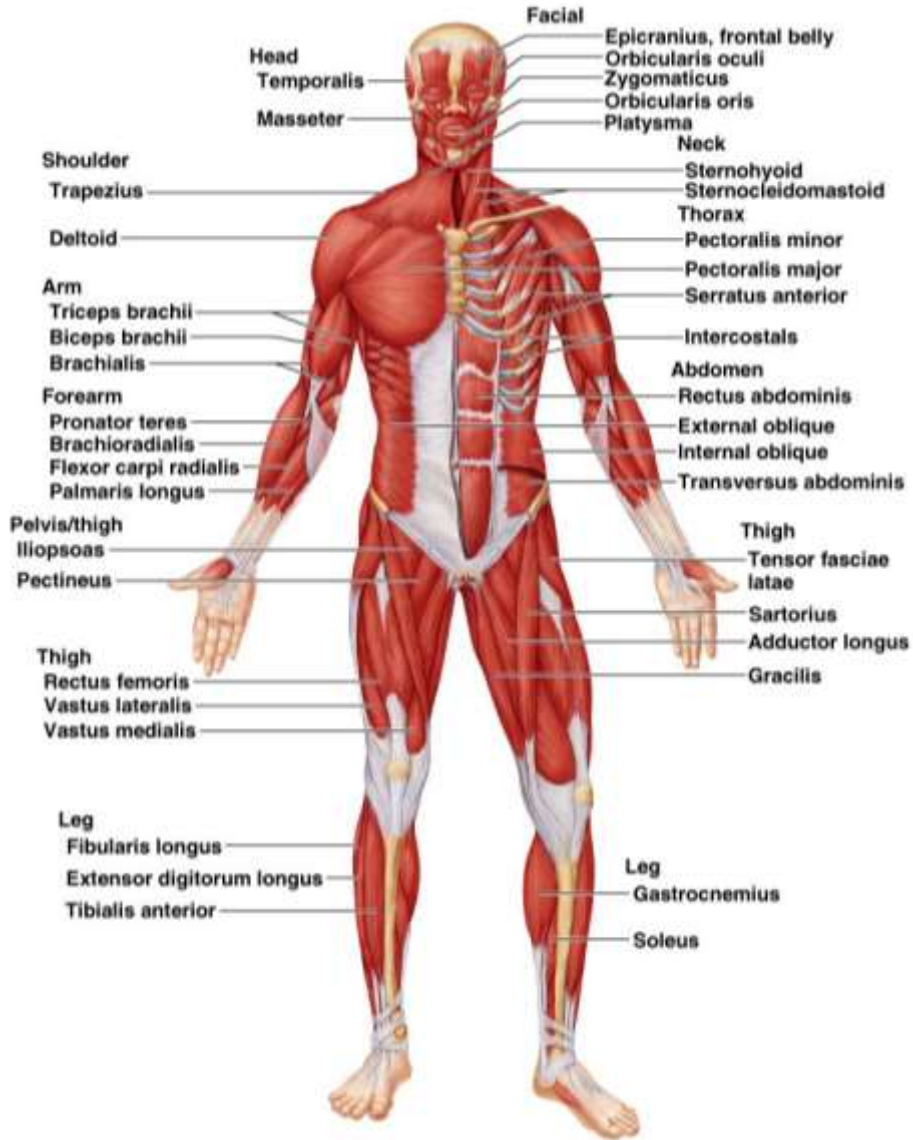
رَضِيتُ بِاللَّهِ رَبًّا وَبِالإِسْلَامِ دِينًا وَبِمُحَمَّدٍ نَبِيًّا وَرَسُولًا رَبِّ زِدْنِي عِلْمًا وَارْزُقْنِي فَهْمًا
اللَّهُمَّ لَّا سَهْلَ إِلَّا مَا جَعَلْتَهُ سَهْلًا وَأَنْتَ تَجْعَلُ الْحَزْنَ إِذَا شِئْتَ سَهْلًا

VISI MISI FK UMM

Fakultas
Pada tahun 2026, menjadi Fakultas Kedokteran terkemuka berbasis IPTEKS dan menghasilkan lulusan yang profesional dan Islami

PS
PPD : Pada tahun 2026, menjadi Program Studi Pendidikan Dokter terkemuka berbasis IPTEKS dan menghasilkan lulusan yang profesional, Islami dan unggul di bidang kedokteran industri.
PSPD : Pada tahun 2026, menjadi Program Studi Profesi Dokter terkemuka di berbasis IPTEKS dan menghasilkan dokter yang profesional, Islami dan unggul di bidang kedokteran industri.

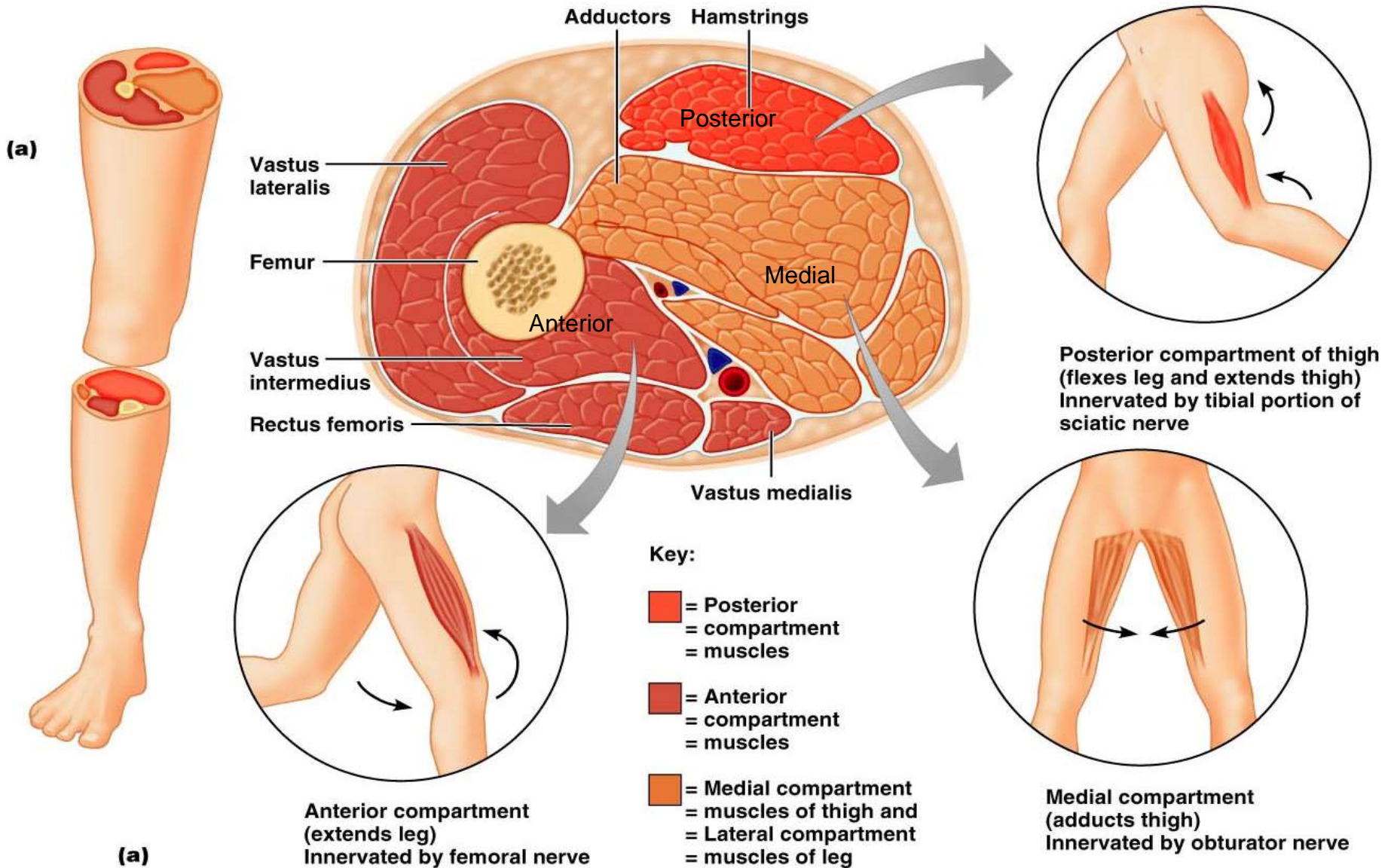
Penampang Anterior dan Posterior



(a)

(b)

Kompartemen Musculus




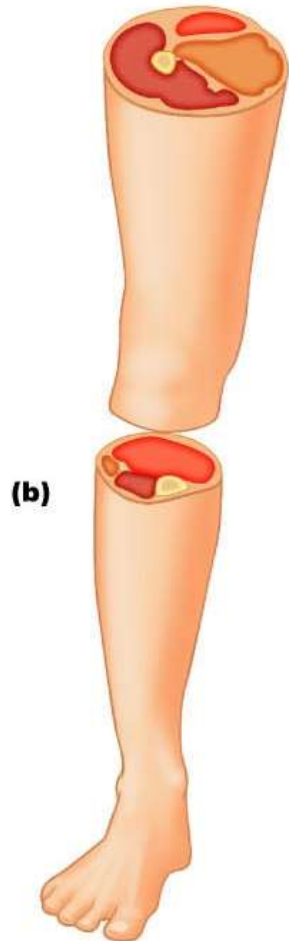
Kompartemen Musculus

Key:

 = Posterior compartment = muscles

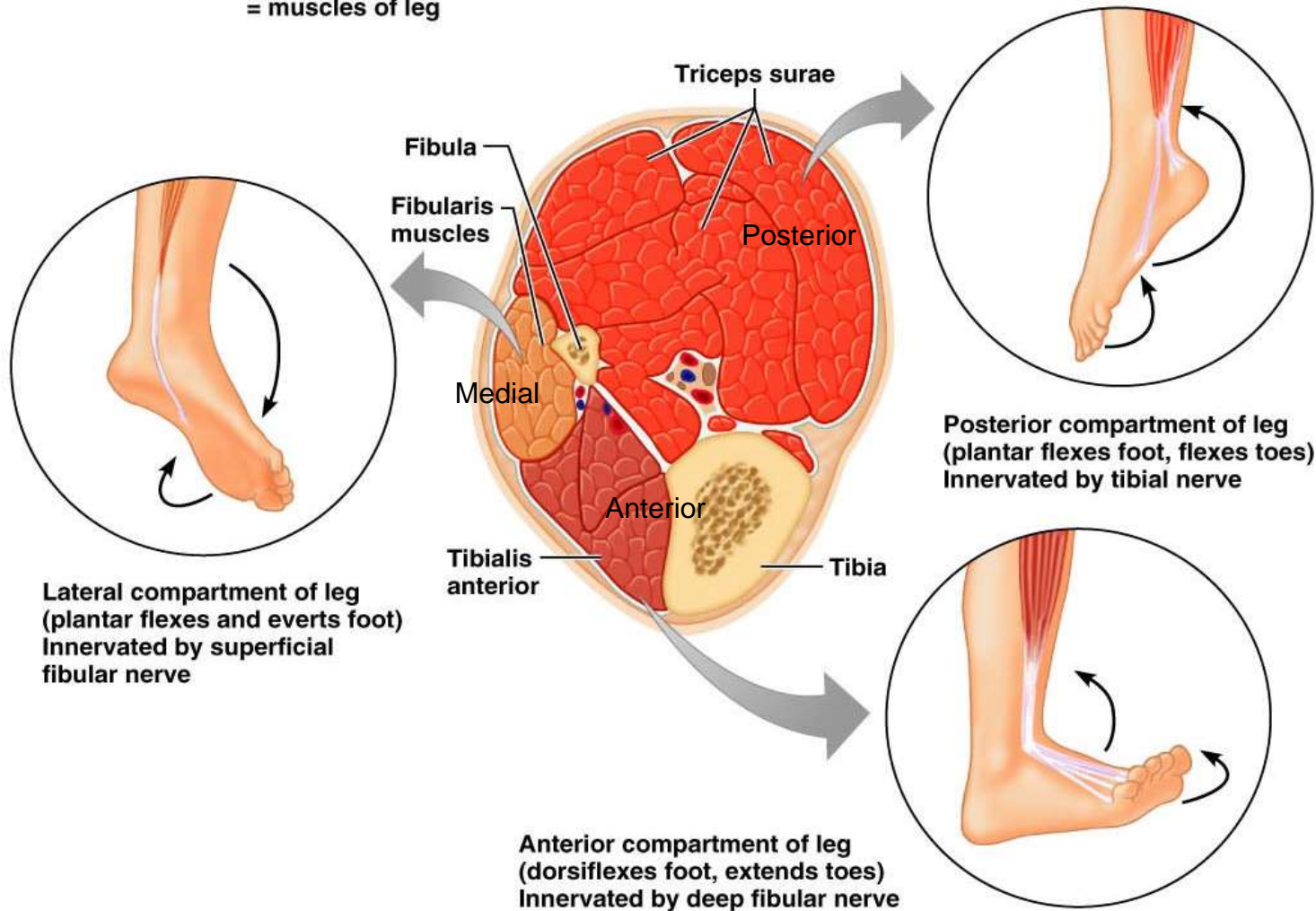
 = Anterior compartment = muscles

 = Medial compartment = muscles of thigh and Lateral compartment = muscles of leg



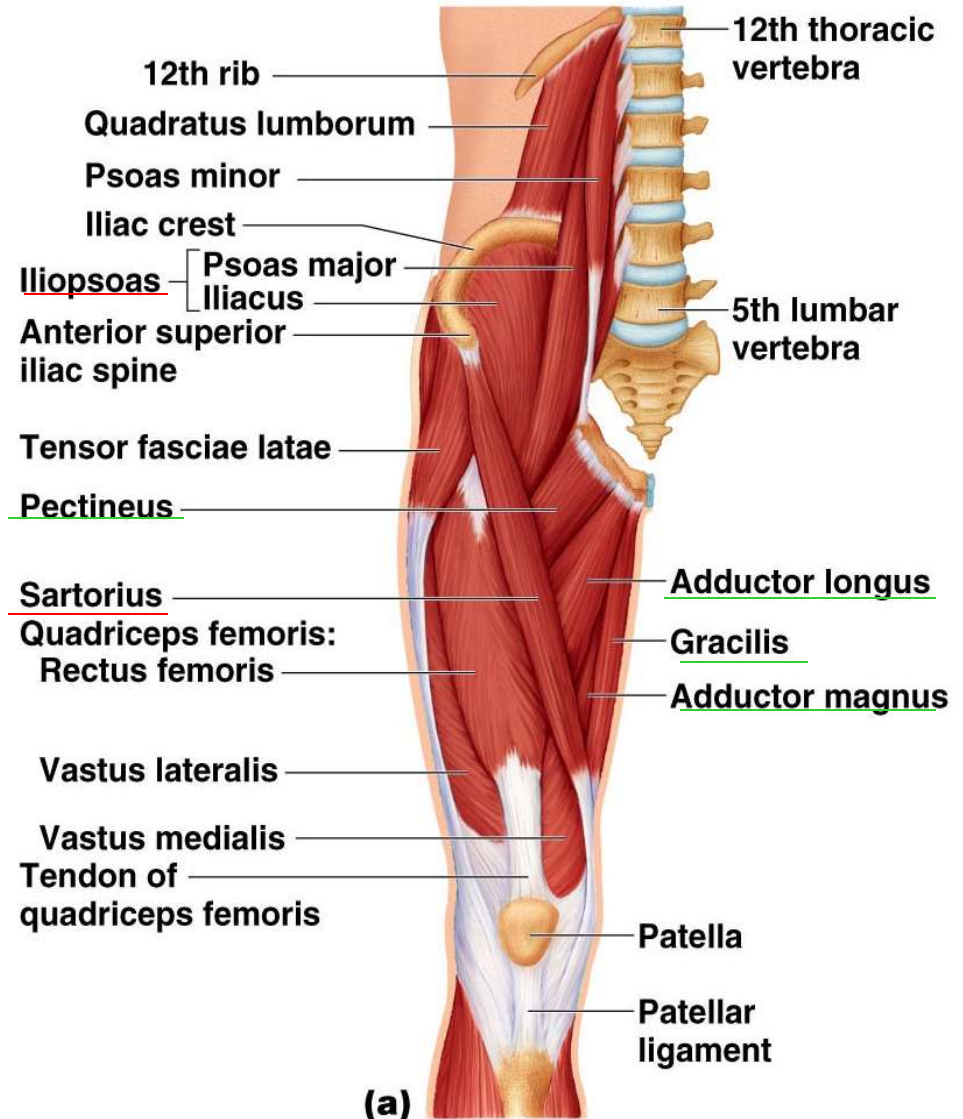
(b)

(b)



Musculus Bagian Anterior dan Medial

- Musculus yang berorigo pada pelvis dan collumna vertebralis
 - Iiacus
 - Psoas major
 - Sartorius
- Musculus pada kompartemen medial
 - Adductor longus
 - Adductor brevis
 - Adductor magnus
 - Pectineus
 - Gracilis



Musculus pada kompartemen anterior

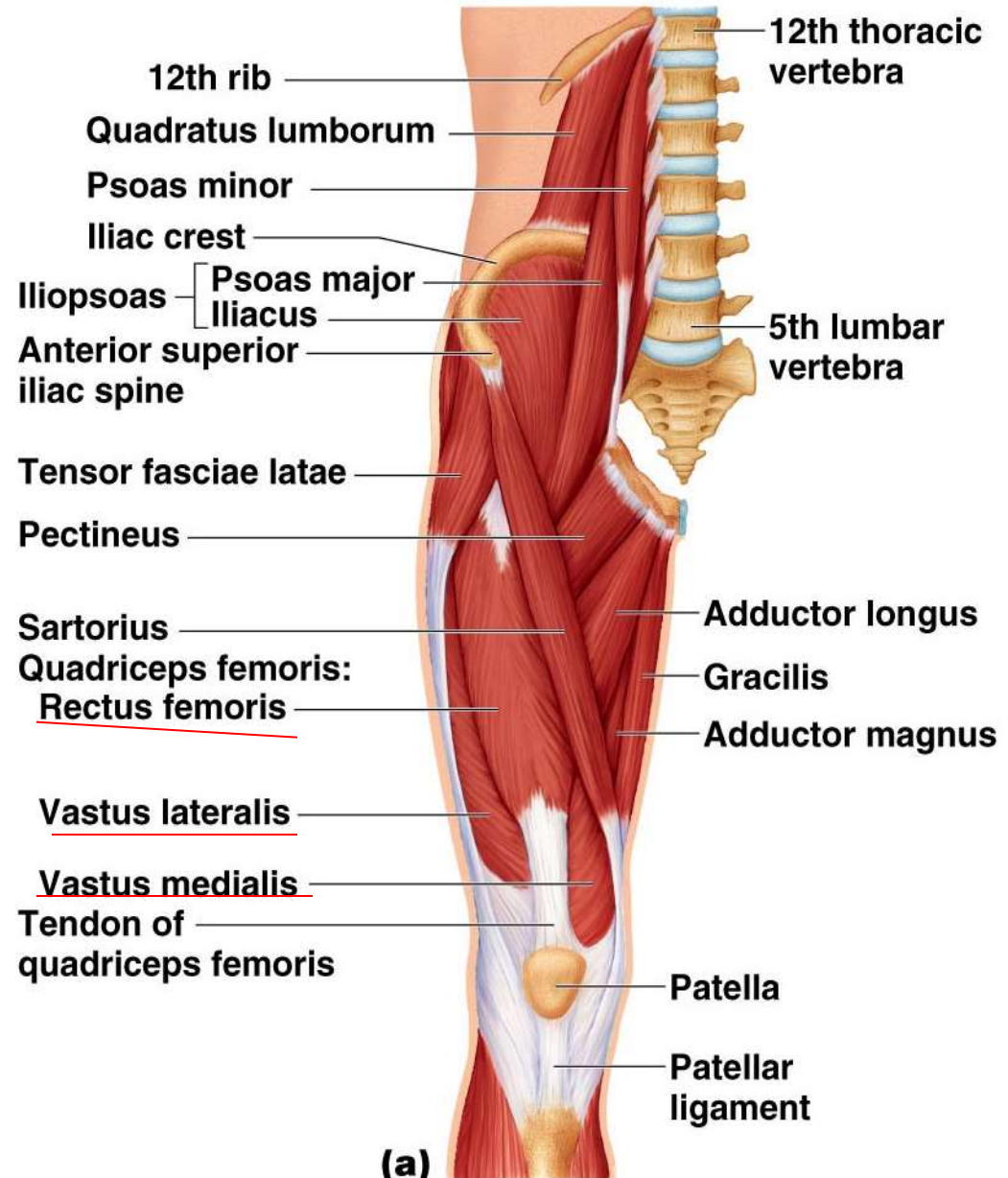
- **Quadriceps femoris**

- Ada empat musculus

- Berfungsi extensi kaki

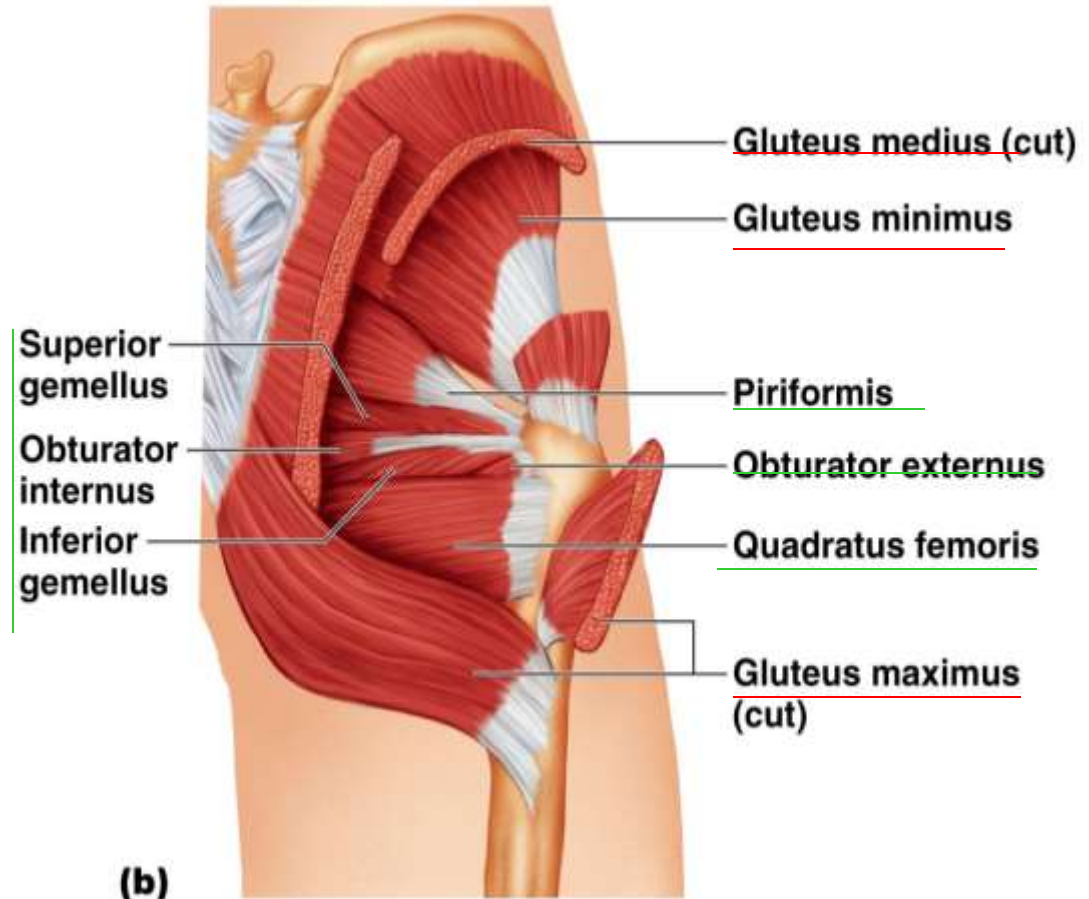
- Rectus femoris
- Vastus lateralis
- Vastus medialis
- Vastus intermedius

- **Tensor fasciae latae**



Musculus Posterior

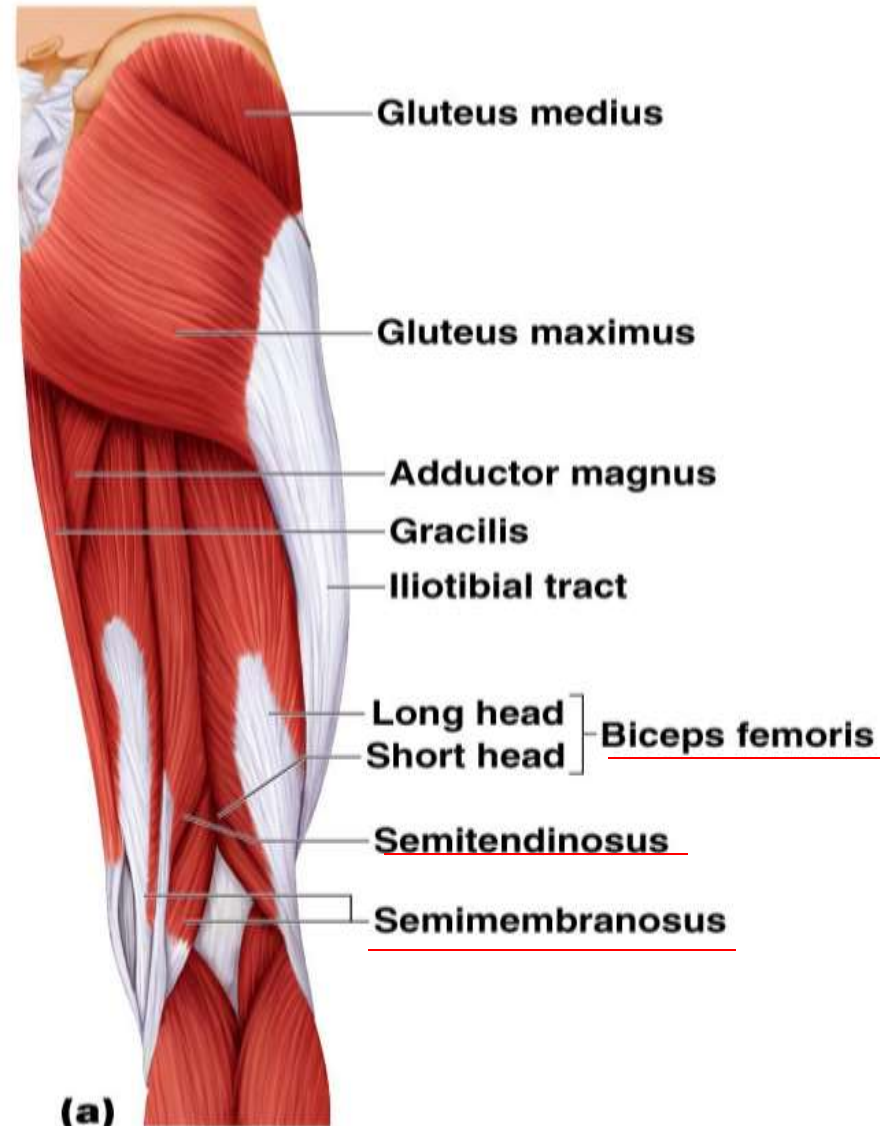
- Berorigo pada pelvis dan sacrum
 - **Gluteus maximus**
 - **Gluteus medius**
 - **Gluteus minimus**
- Rotasi ke Lateral
 - **Piriformis**
 - **Obturator externus**
 - **Obturator internus**
 - **Superior and inferior gemellus**
 - **Quadratus femoris**



Musculus Kompartemen posterior

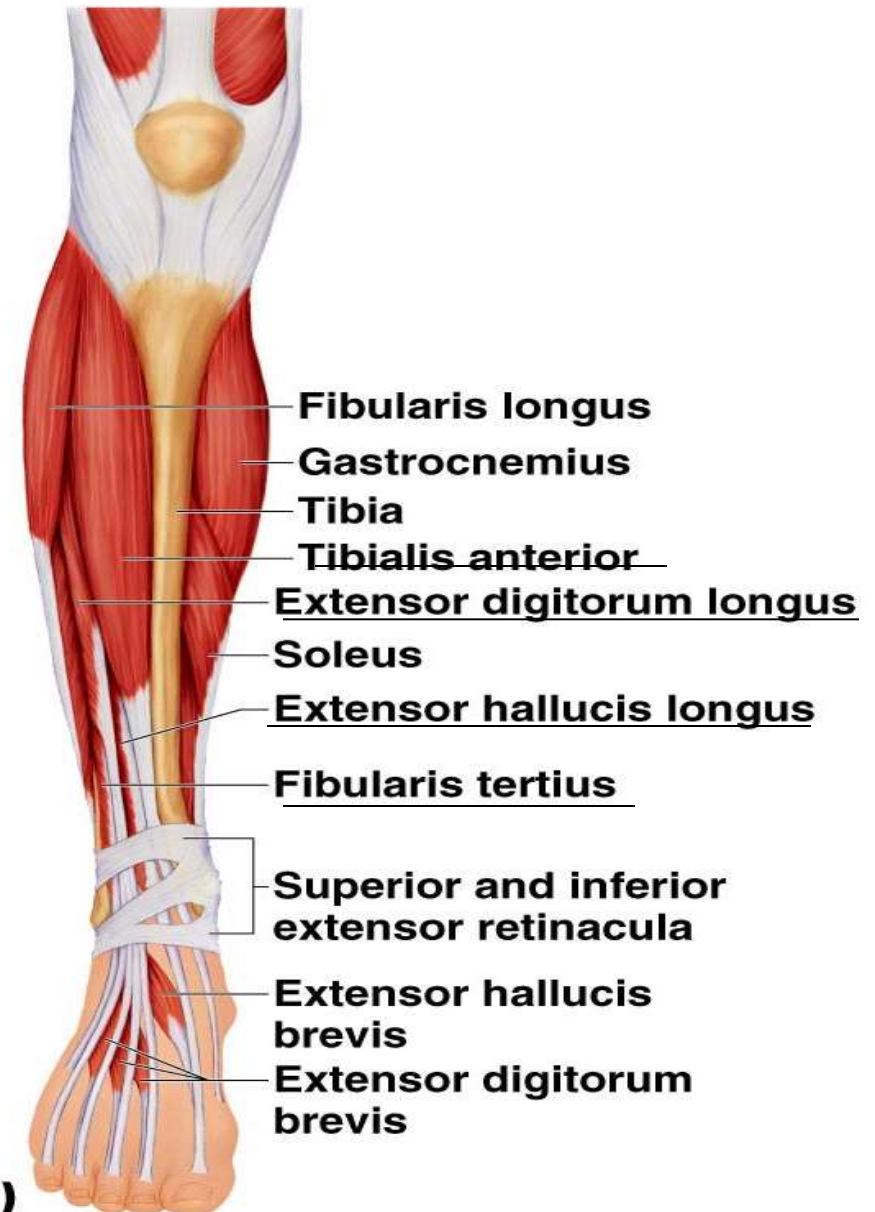
Hamstrings muscle

- **Biceps femoris**
- **Semitendinosus**
- **Semimembranosus**



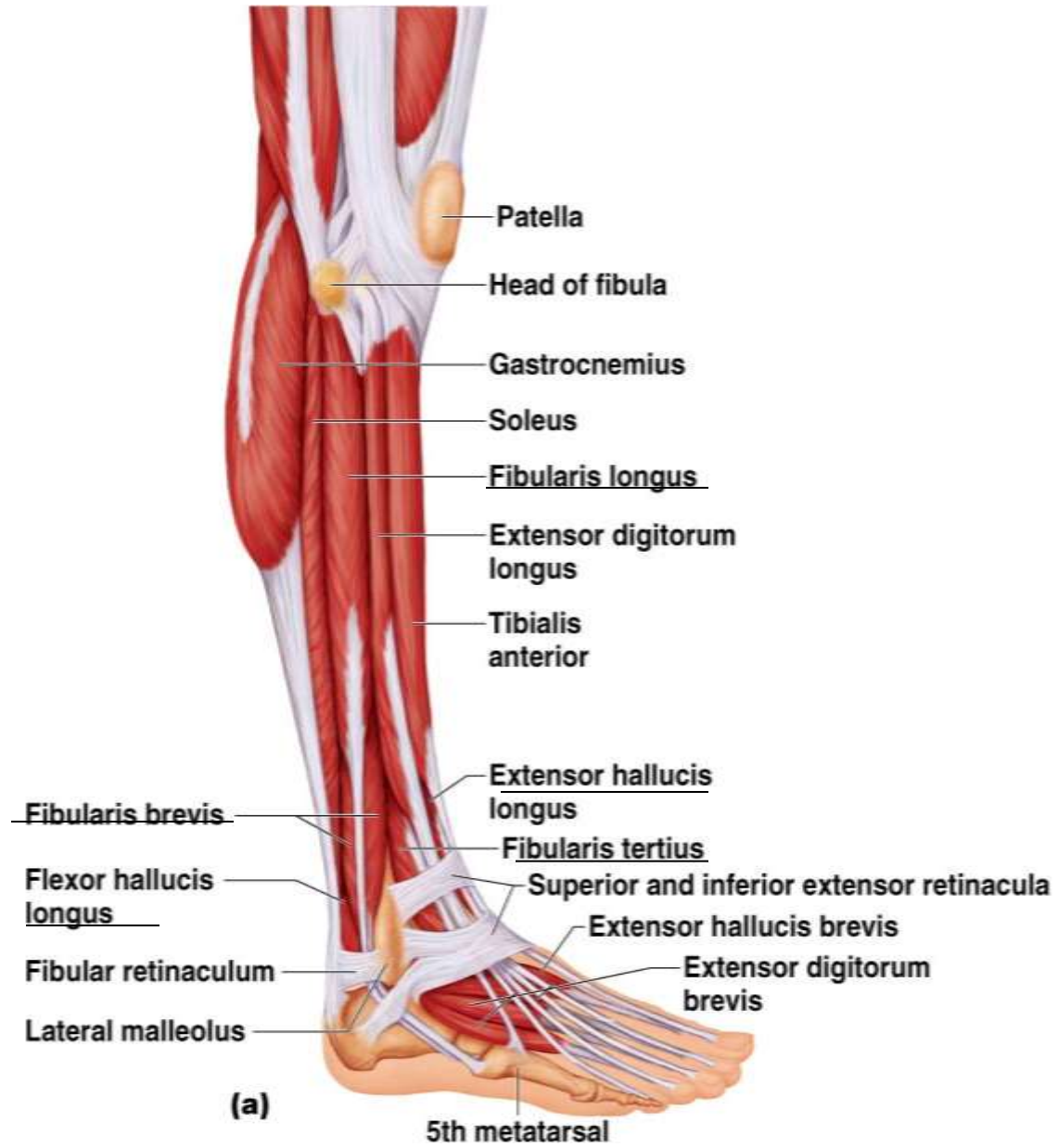
Musculus bagian Kompartemen Anterior

- Tibialis anterior
- Extensor digitorum longus
- Fibularis (peroneus) tertius
- Extensor hallucis longus



Musculus Bagian Kompartemen Lateral

- Fibularis (peroneus) longus
- Fibularis (peroneus) brevis
- Flexor hallucis longus
- Extensor hallucis longus
- Fibularis tertius



Musculus CompartemenPosterior

- Superficial muscles
 - Triceps surae
 - Gastrocnemius medial
 - Gastrocnemius Lateral
 - Soleus
 - Plantaris

Muscles of the Posterior

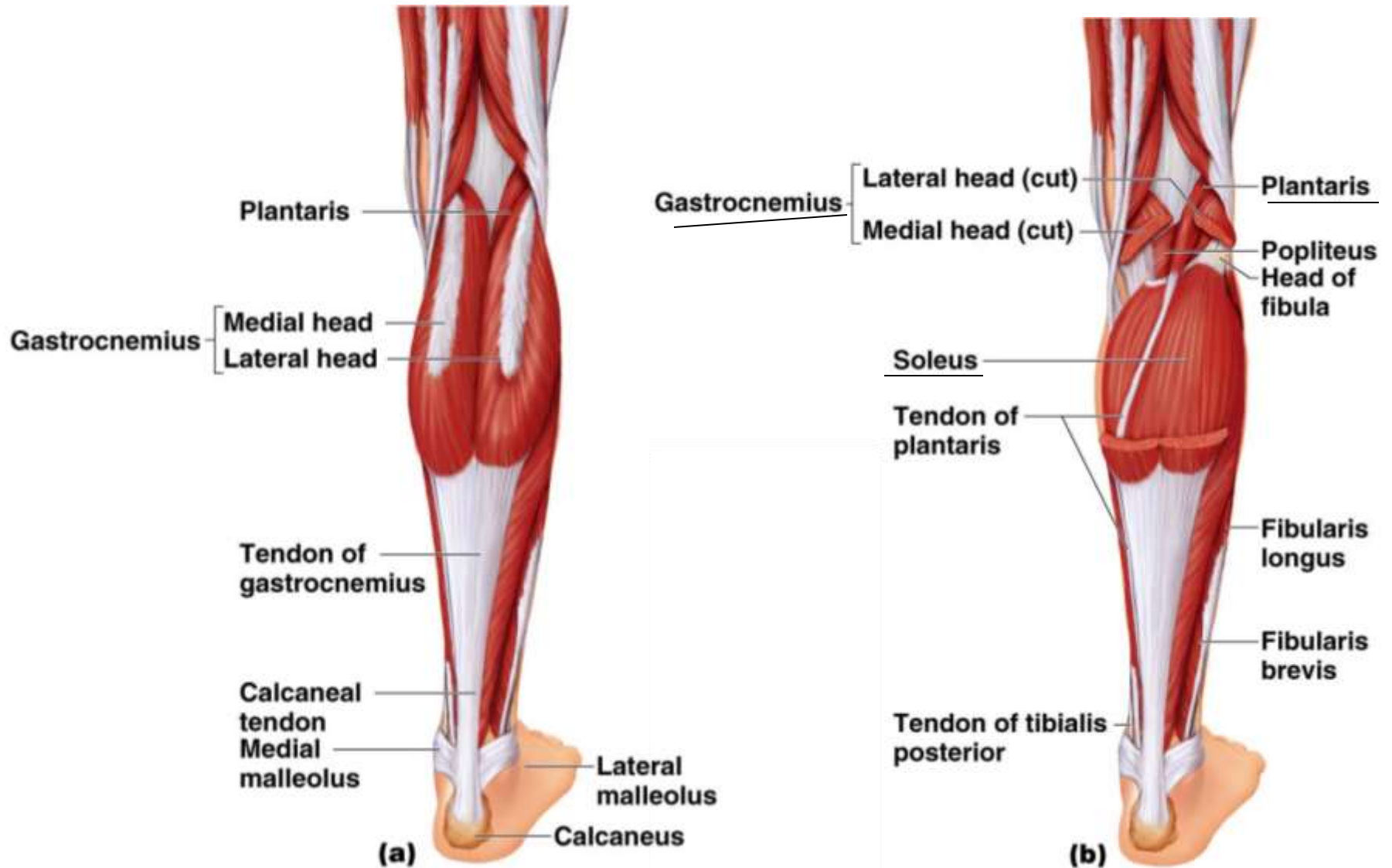
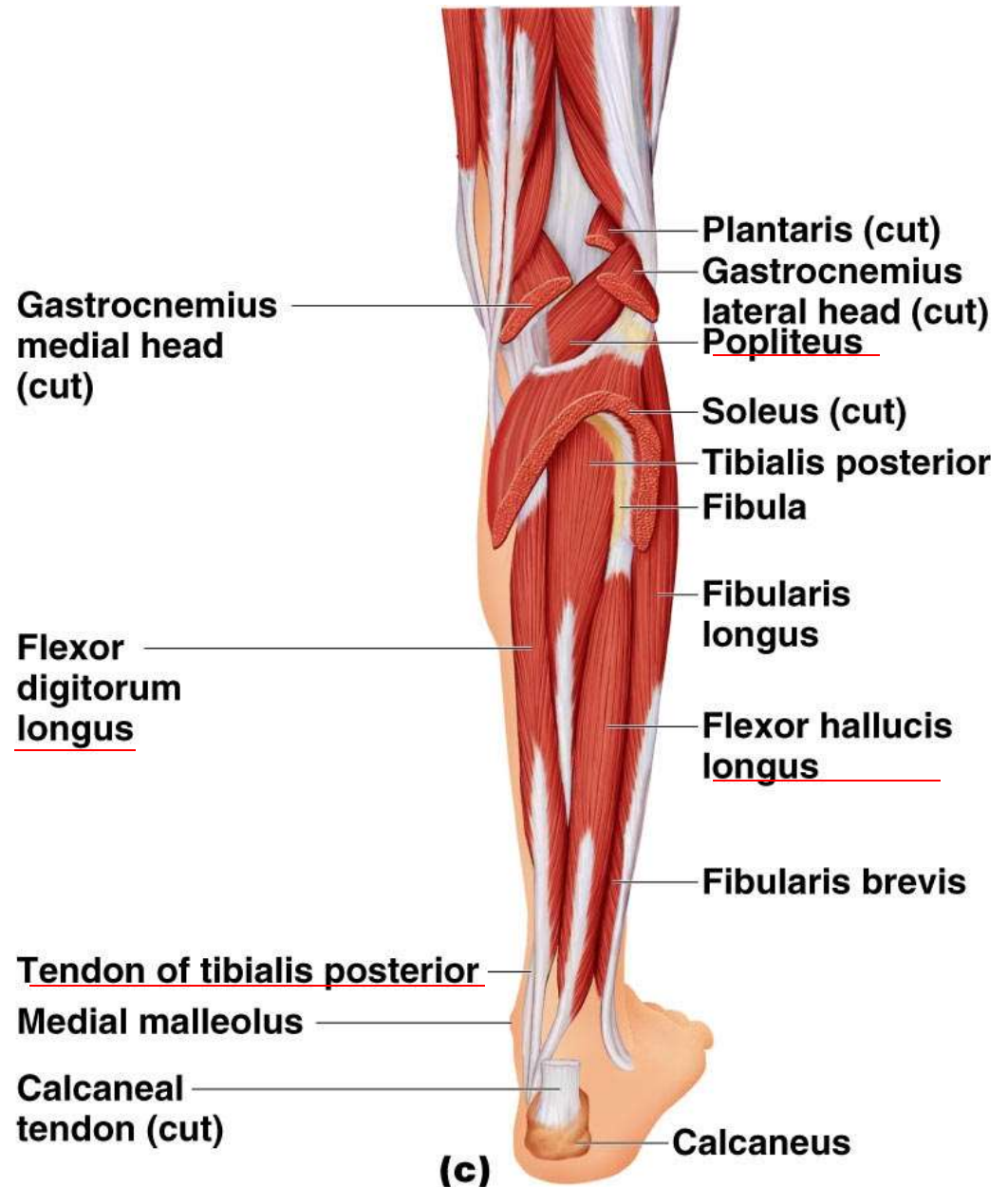


Figure 11.24a, b

Musculus Kompartemen Posterior

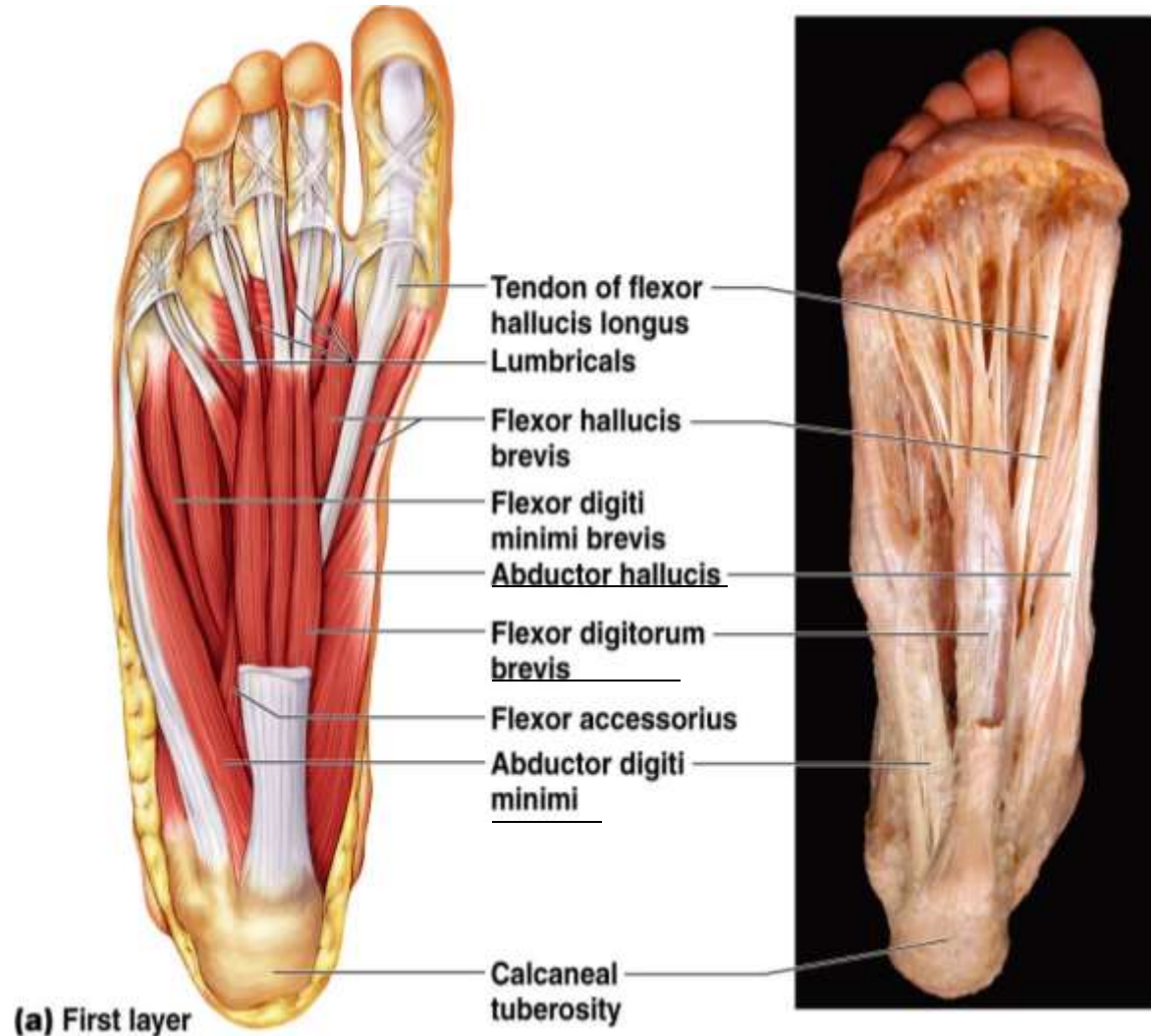
- Otot bagian dalam

- Popliteus
- Flexor digitorum longus
- Flexor hallucis longus
- Tibialis posterior



Musculus Intrinsik Telapak Kaki

- First layer
 - Flexor digitorum brevis
 - Abductor hallucis
 - Abductor digiti minimi



KOMPLIKASI DIABETES MELLITUS: MANAJEMEN TATA LAKSANA ULKUS DIABETETIKUM



dr. Mochamad Aleq Sander, M.Kes., SpB, dr. Thontowi Djauhari NS, M.Kes.
2022. Laporan Program Pengabdian Masyarakat Internal Skim: Ipteks Bagi Masyarakat

Musculus Intrinsik Telapak Kaki

- Second layer
 - Flexor accessorius
 - Lumbricals

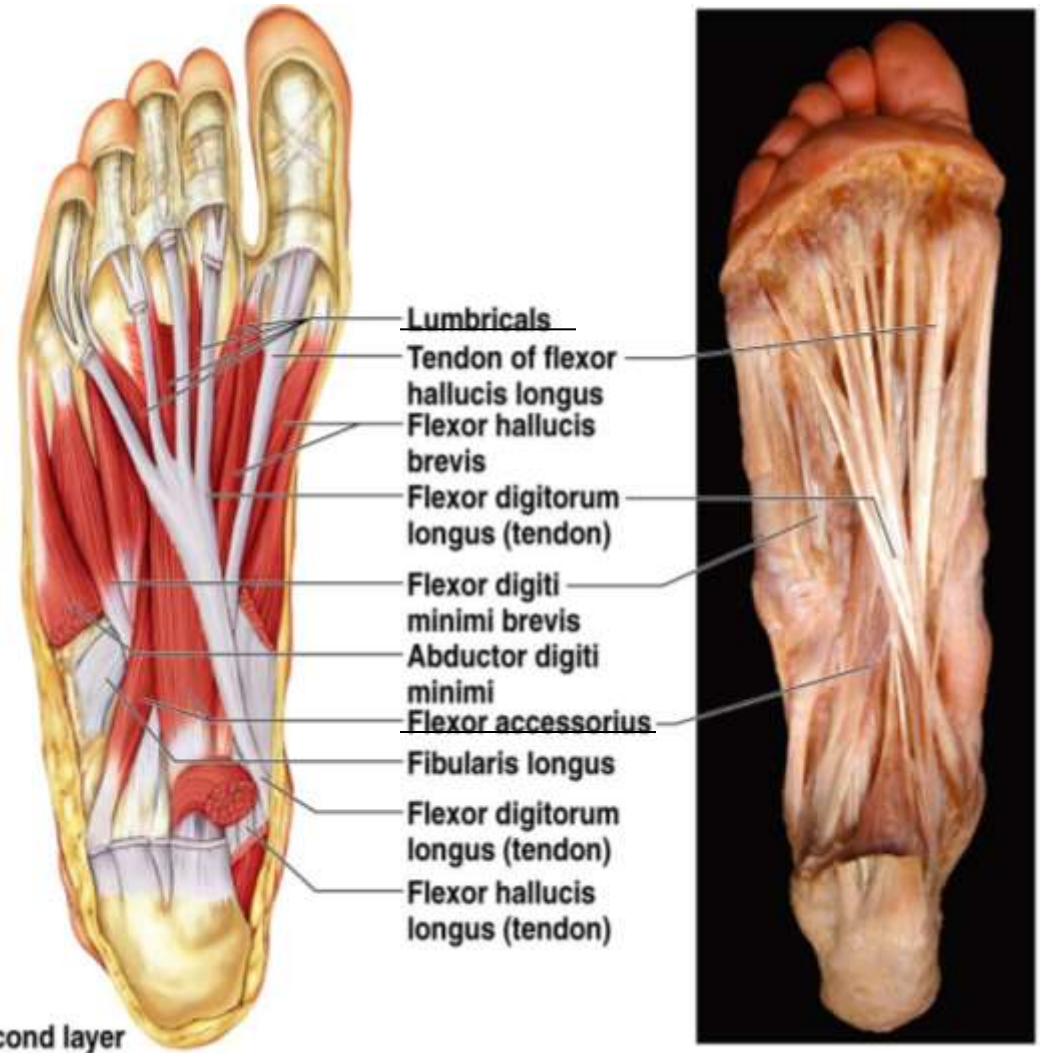
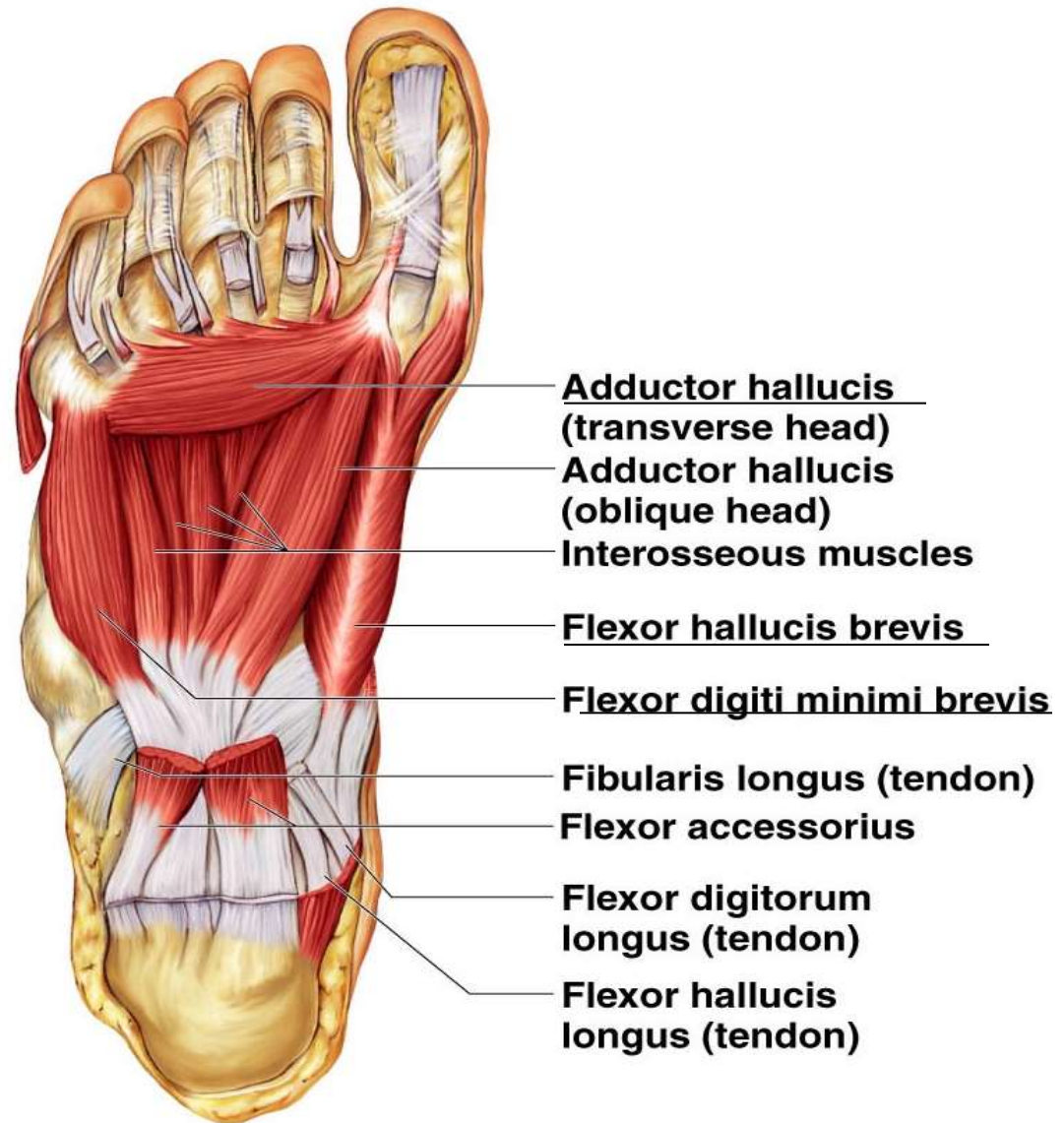


Figure 11.25b

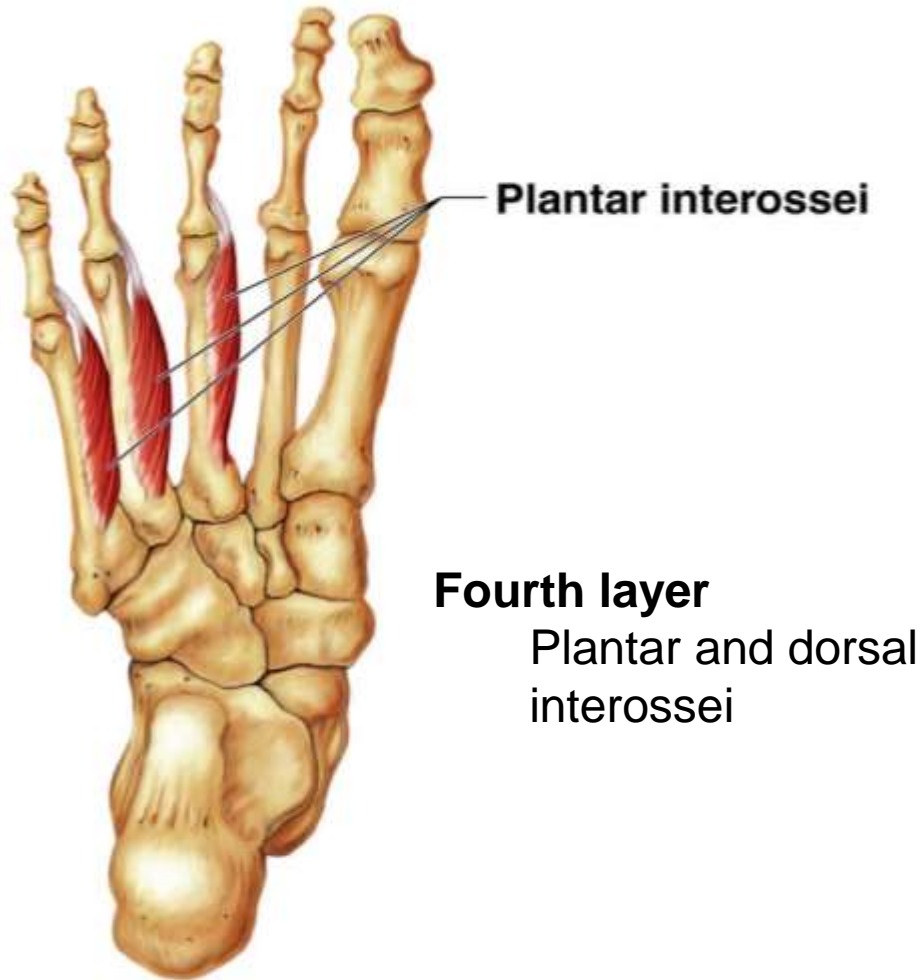
Musculus Intrinsik Telapak Kaki

- Third layer
 - Flexor hallucis brevis
 - Adductor hallucis
 - Flexor digiti minimi brevis



(c) Third layer

Musculus Intrinsik Telapak Kaki

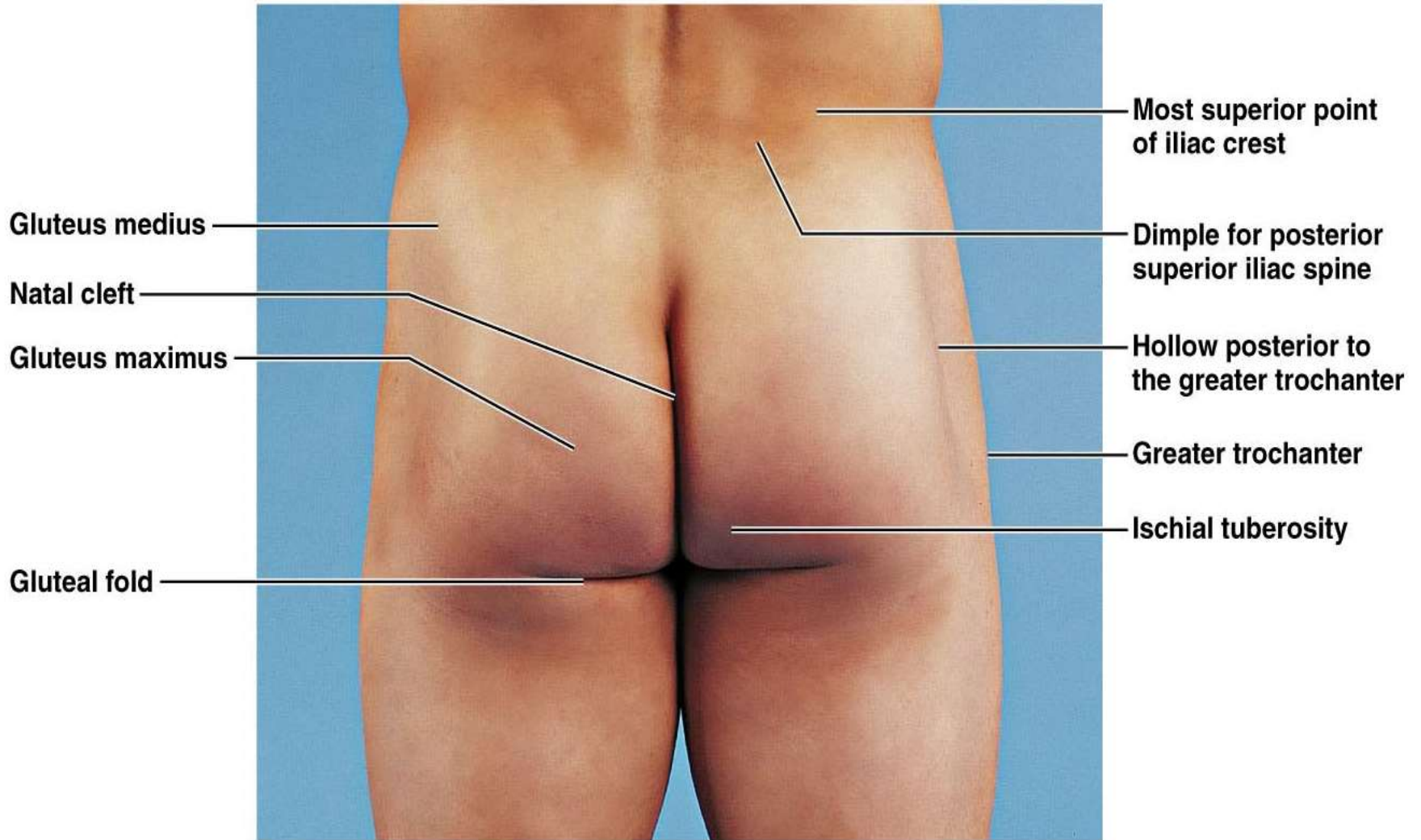


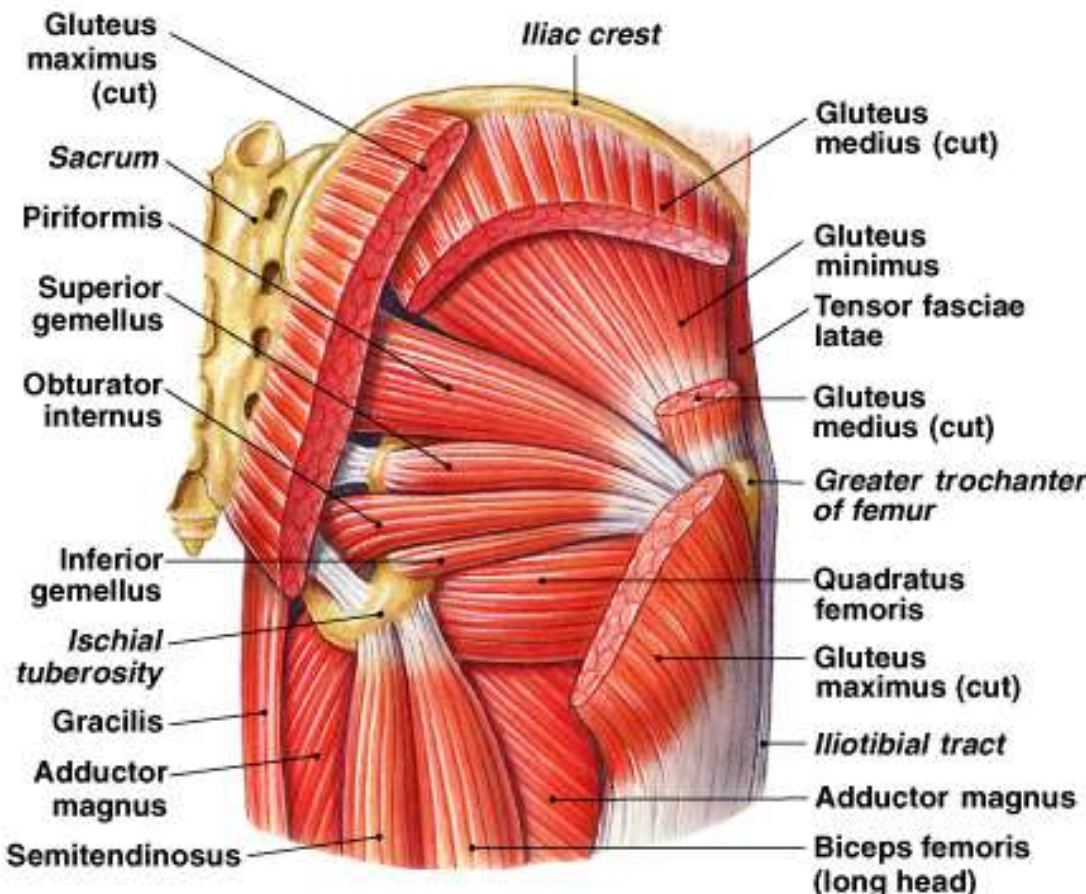
(d) Fourth layer: plantar interossei



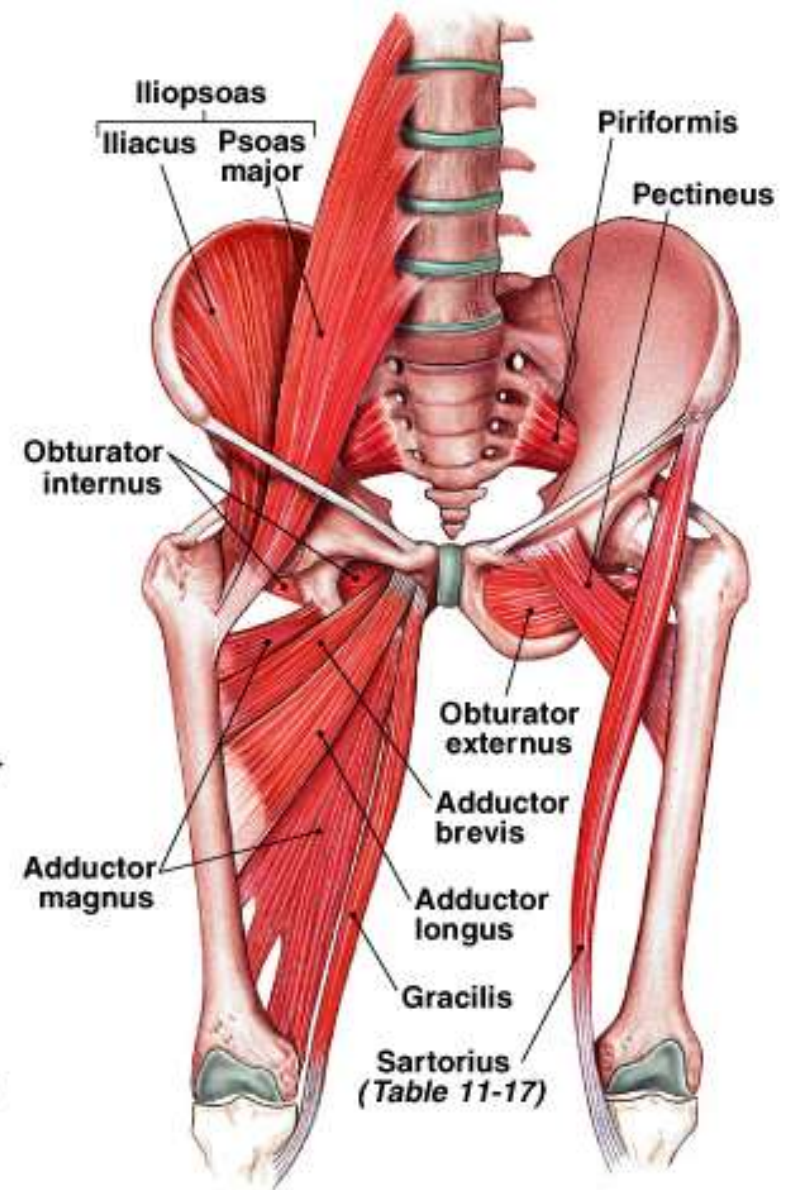
(e) Fourth layer: dorsal interossei

Regio Glutea





(c) Posterior view, deep muscles



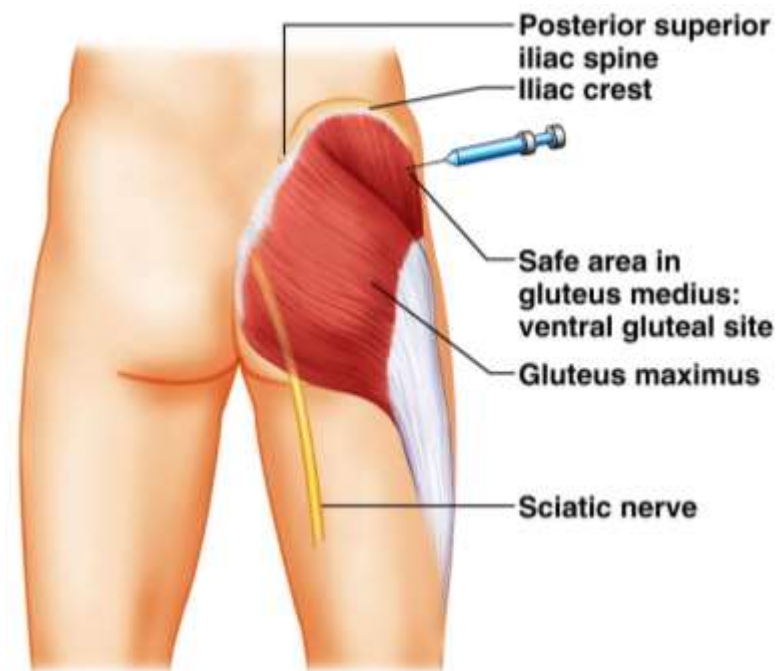
(d) The iliopsoas muscle and the adductor group

Regio Glutea bagian Bawah

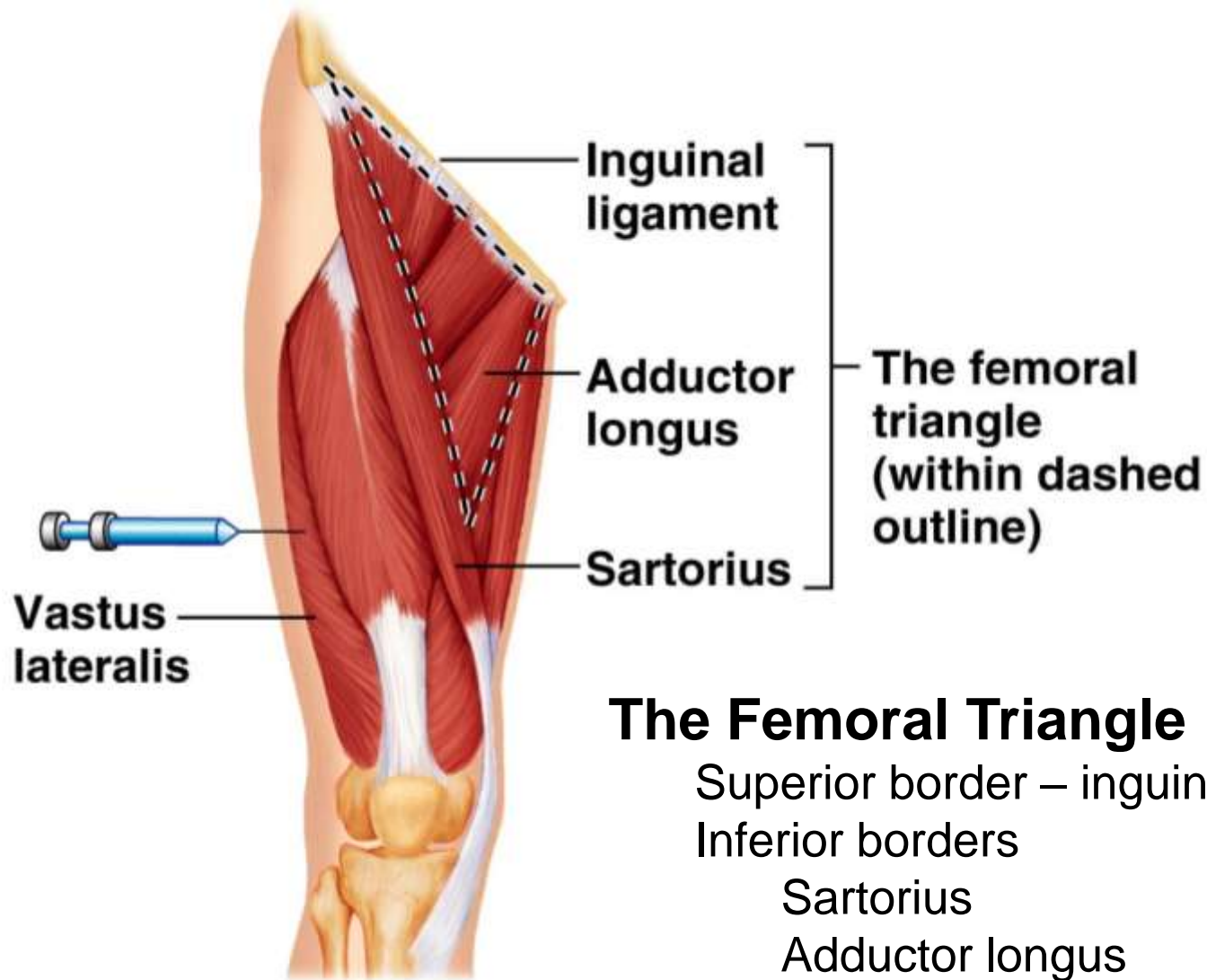
Hubungan Masa Kerja dan Beban Kerja Fisik Terhadap Risiko Kejadian Nyeri Pinggang yang Disertai Dengan Gangguan Nervus Ischiadicus (Low Back Pain Sciatica) Pada Petani Padi di Desa Pakisaji

Berdasarkan hasil penelitian dengan judul "Hubungan Masa Kerja dan Beban Kerja Fisik Terhadap Risiko Terjadinya Nyeri Pinggang yang Disertai dengan Gangguan Nervus Ischiadicus (Low Back Pain Sciatica) pada Petani Padi di Desa Pakisaji", maka dapat disimpulkan bahwa:

1. Terdapat hubungan positif antara masa kerja dan risiko terjadinya low back pain sciatica. Artinya, semakin lama masa kerja, semakin tinggi risiko untuk mengalami low back pain sciatica pada petani padi di Desa Pakisaji.



(a)



The Femoral Triangle

Superior border – inguinal ligament

Inferior borders

Sartorius

Adductor longus

(b)

Vastus lateralis – injection site

Muscle Groups of the Leg

Hamstring muscles:

Biceps femoris

Semitendinosus

Semimembranosus

Popliteal fossa

Gastrocnemius:

Medial head

Lateral head

Soleus

Calcaneal tendon

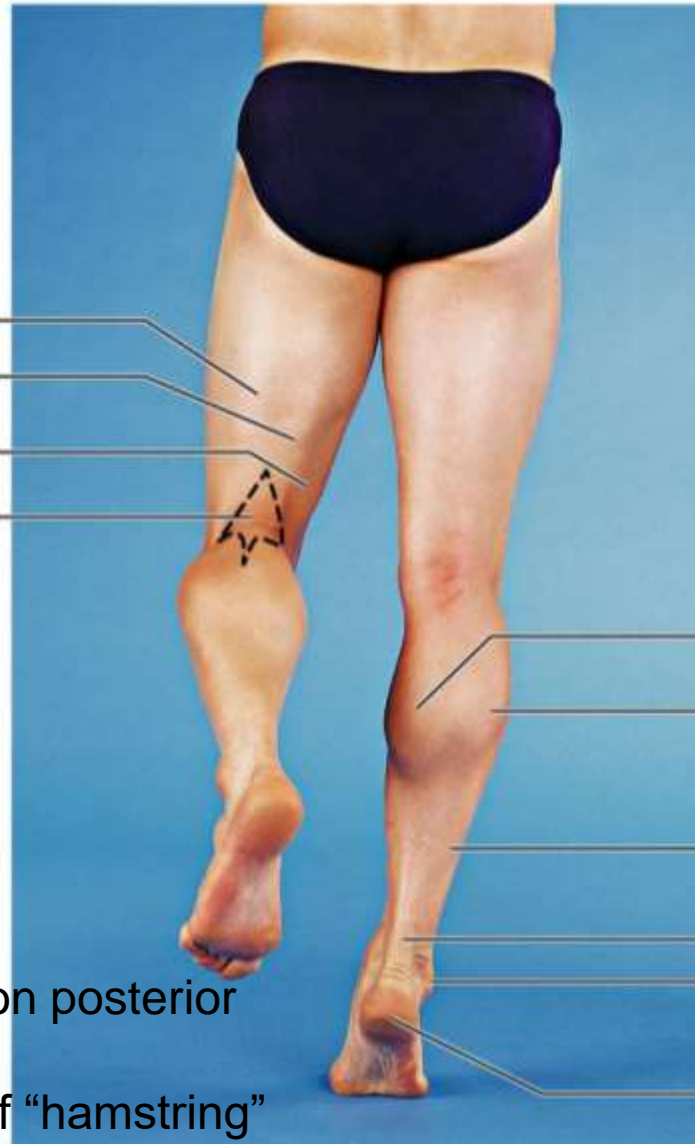
Lateral malleolus

Calcaneus

Popliteal fossa

Diamond-shaped hollow on posterior knee

Defined by borders of “hamstring” tendons and gastrocnemius



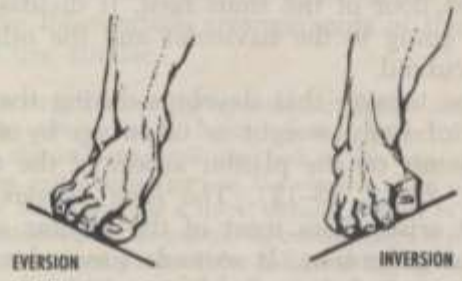
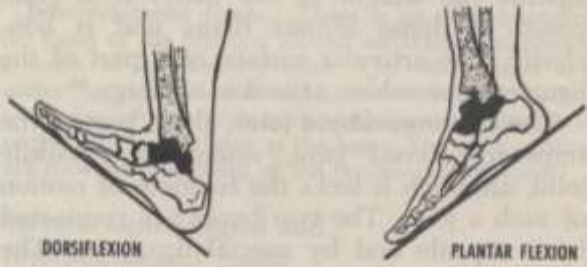
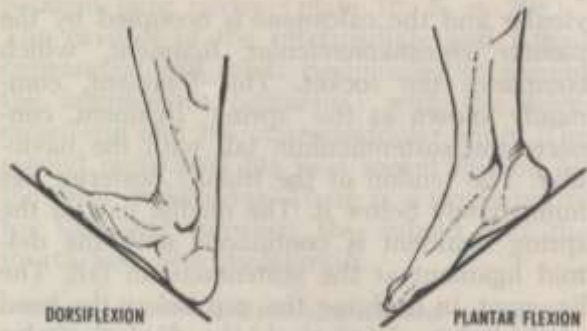


Fig. 23-10. Movements of the foot and ankle. Dorsiflexion and plantar flexion are shown as in walking up and down hill. Movement occurs at the ankle joint. Eversion and inversion are shown as in standing sideways on a hill. Movement occurs at tarsal joints, the talus remaining fixed. Based on S. Mollier.^{10*}

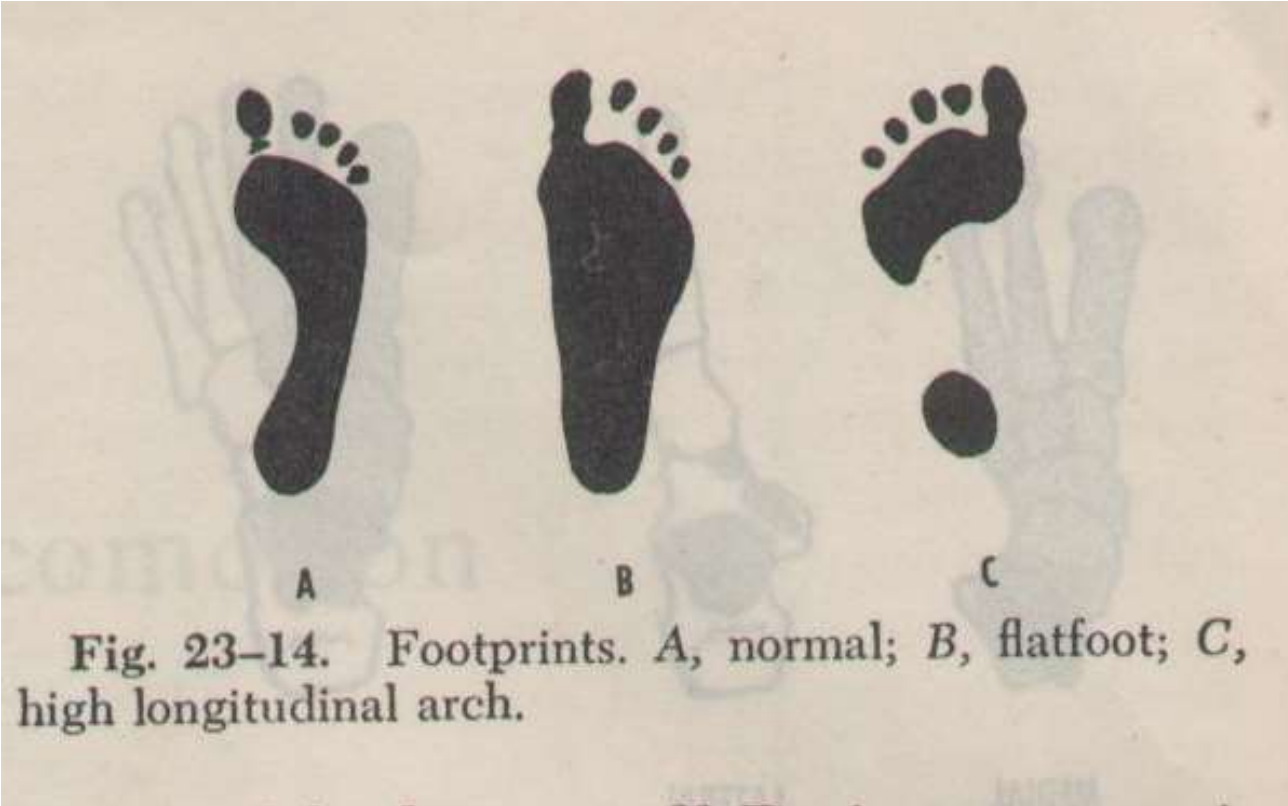


Fig. 23-14. Footprints. A, normal; B, flatfoot; C, high longitudinal arch.

Plexus Lumbaris

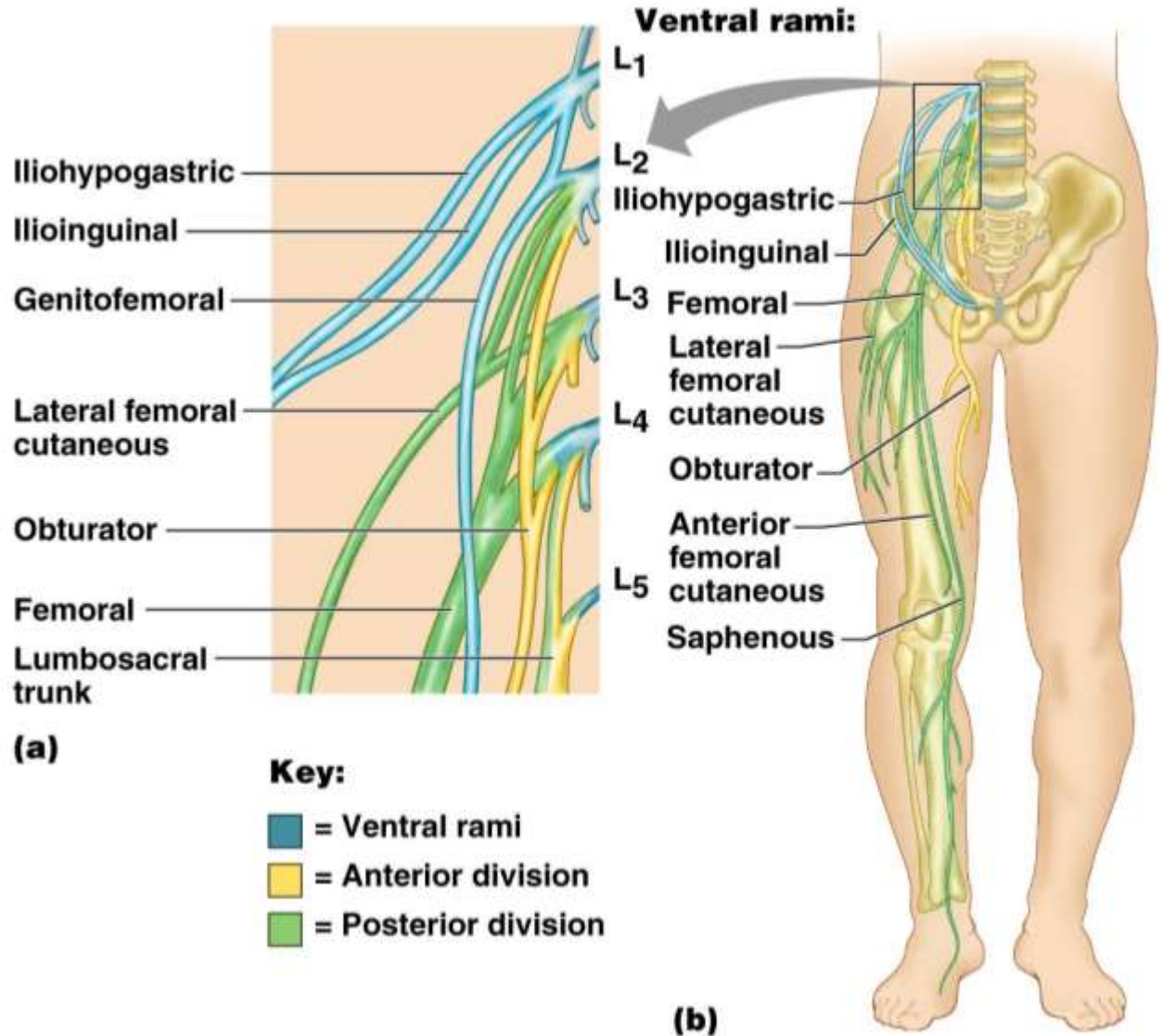
Lumbar plexus

Asala dari L1– L4

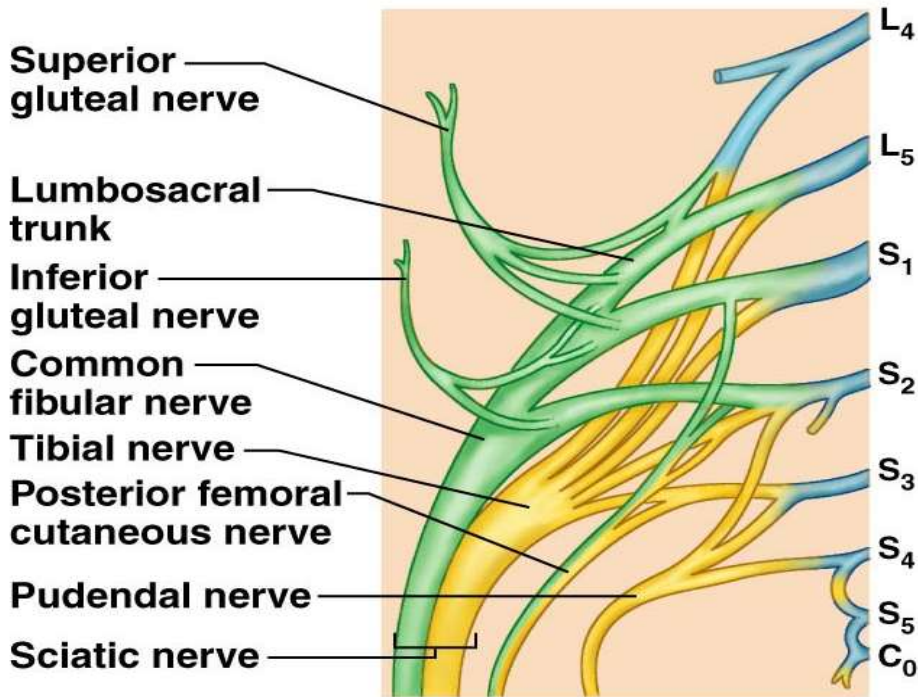
Sebagian kecil menginnervasi bagian abdomen dan m. psoas

n. Femoralis nerve – menginnervasi musculus bagian anterior

n. Obturator menginnervasi musculus adductor



Plexus Sacralis

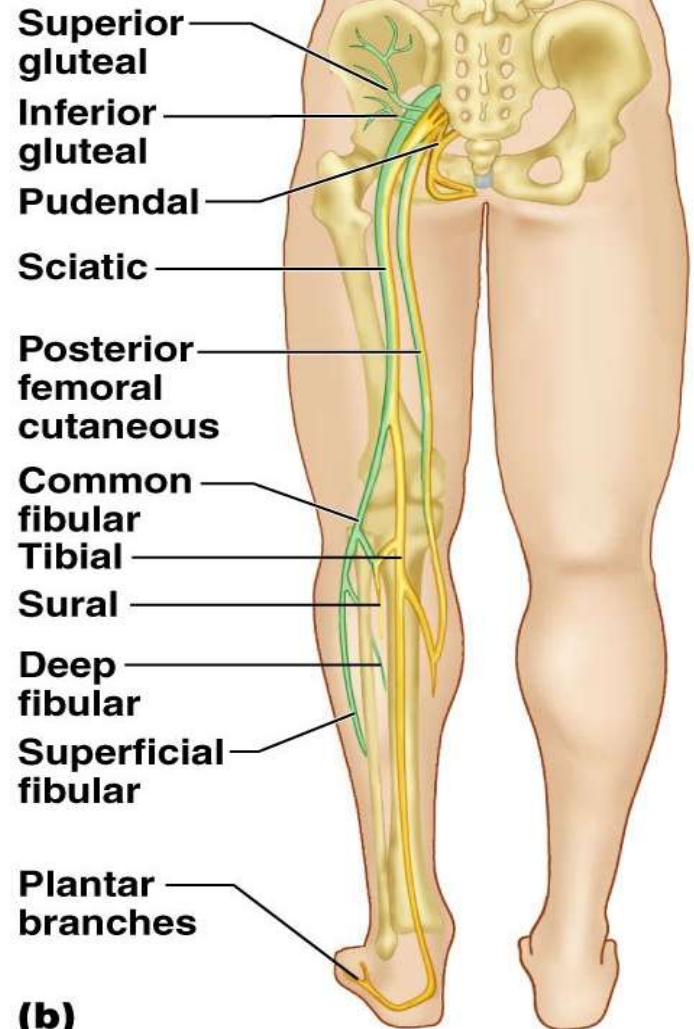


Key:

- = Ventral rami
- = Anterior divisions
- = Posterior divisions

(a)

Ventral rami:



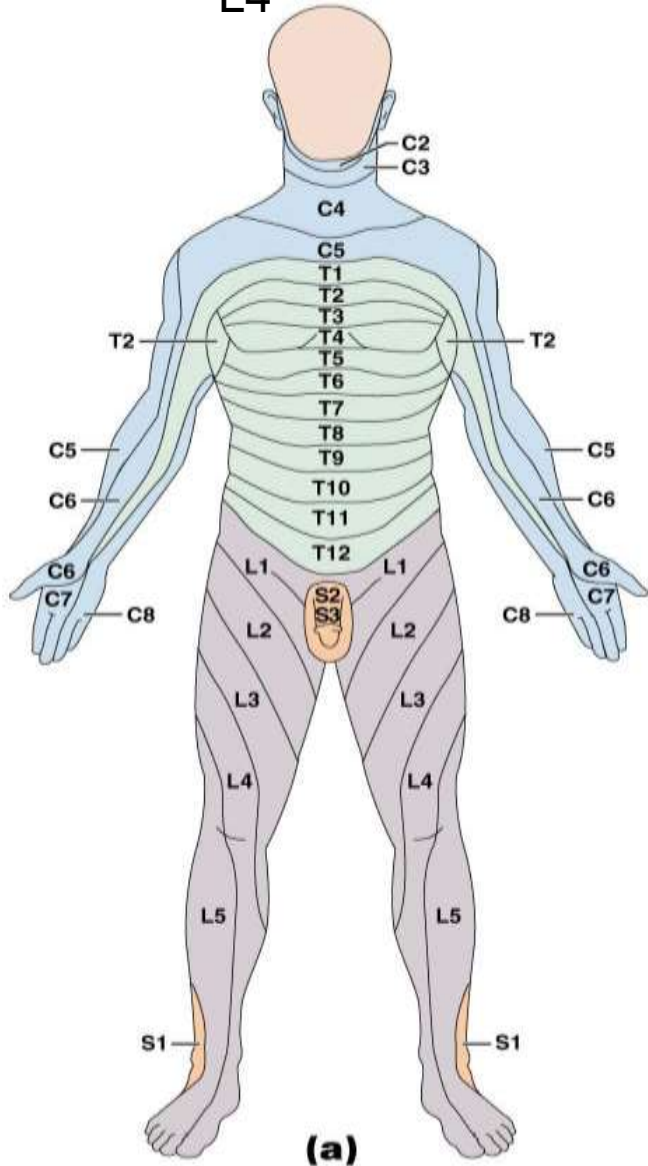
(b)

Peta Dermatome Saraf

- **Peta Dermatome** – area yang dapat dilihat di kulit
 - Innervasi oleh suatu kumpulan saraf spinal
- **Lower limb**
 - Lumbar nerves – anterior surface
 - Sacral nerves – posterior surface

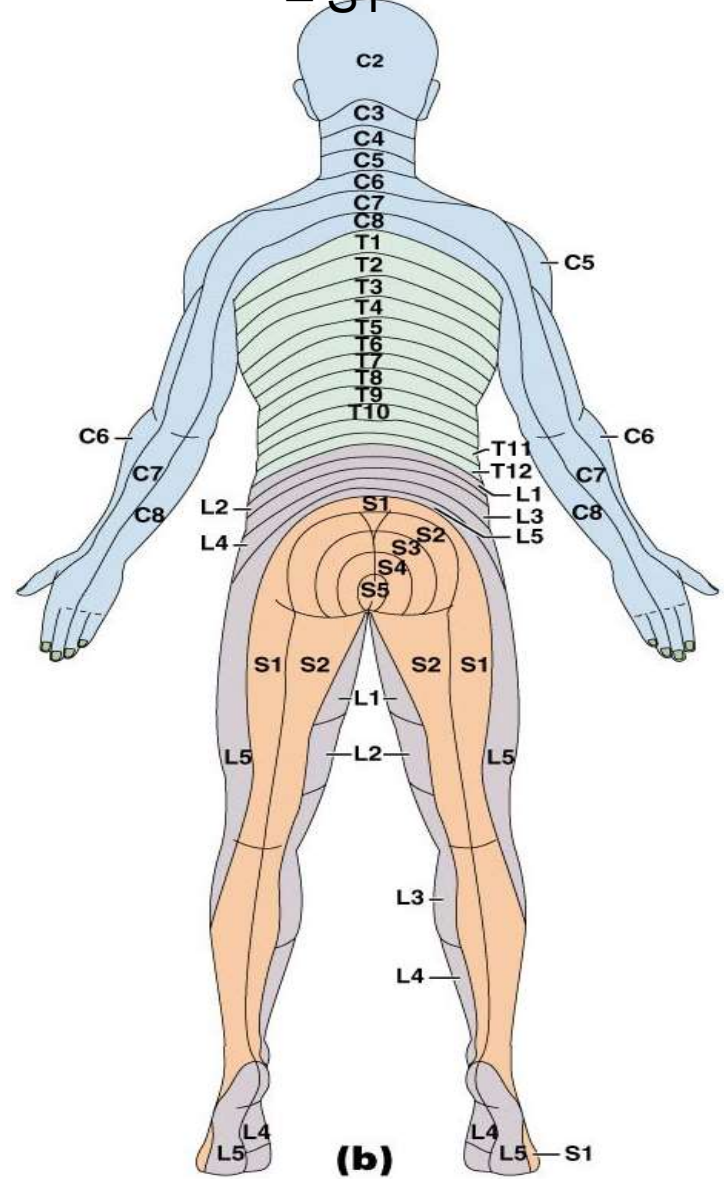
Lumbar plexus

Arises from L1–L4

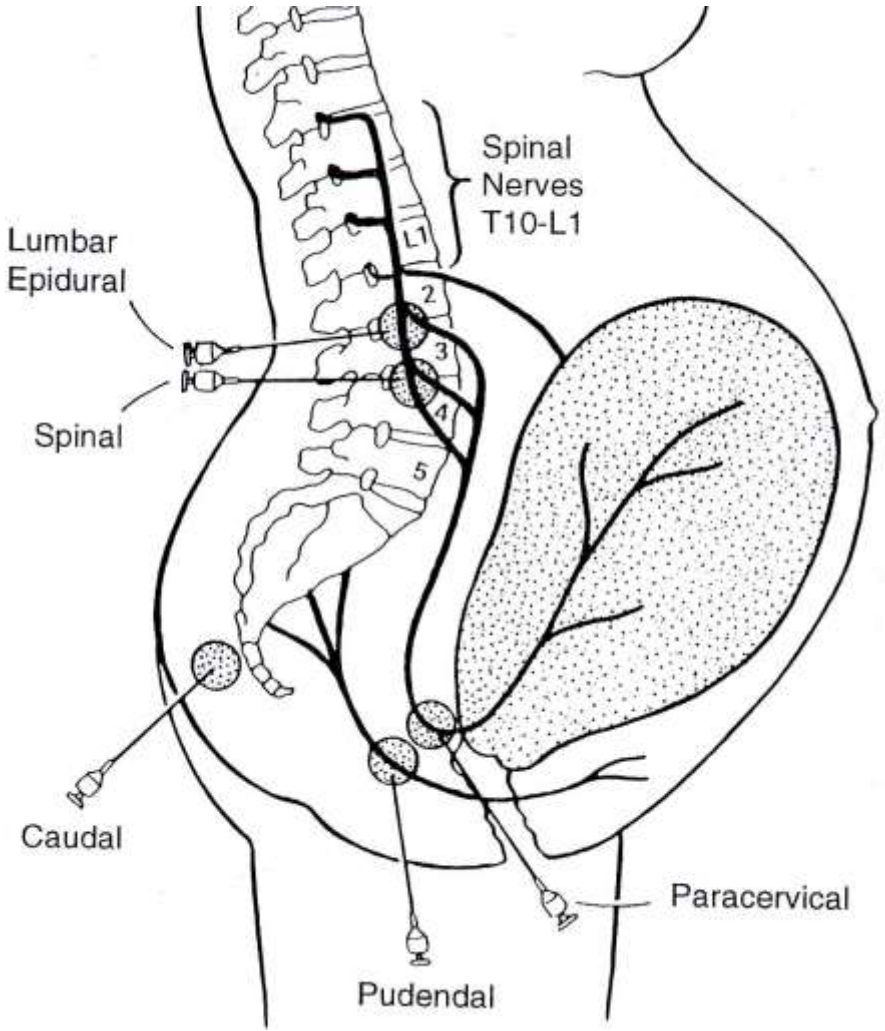


Sacral Plexus

Arise from L4–S1

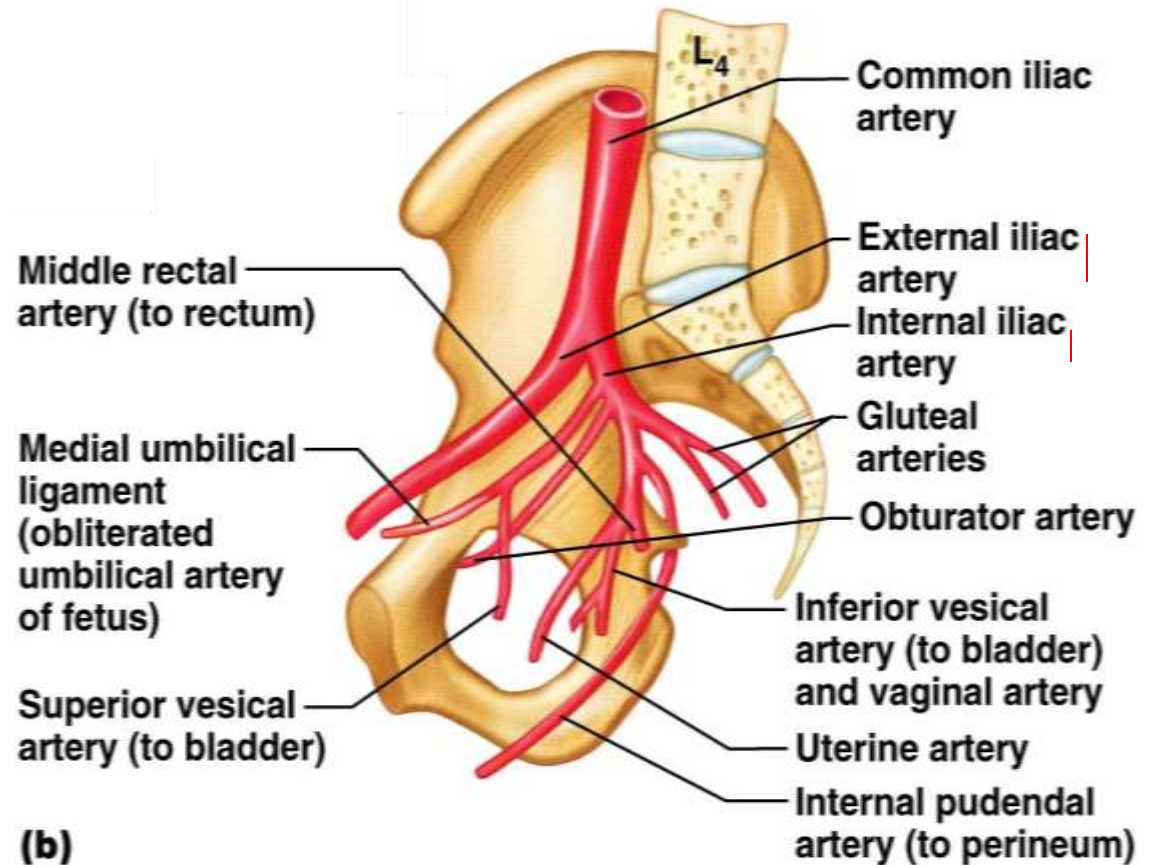


Neural Blockade for Childbirth

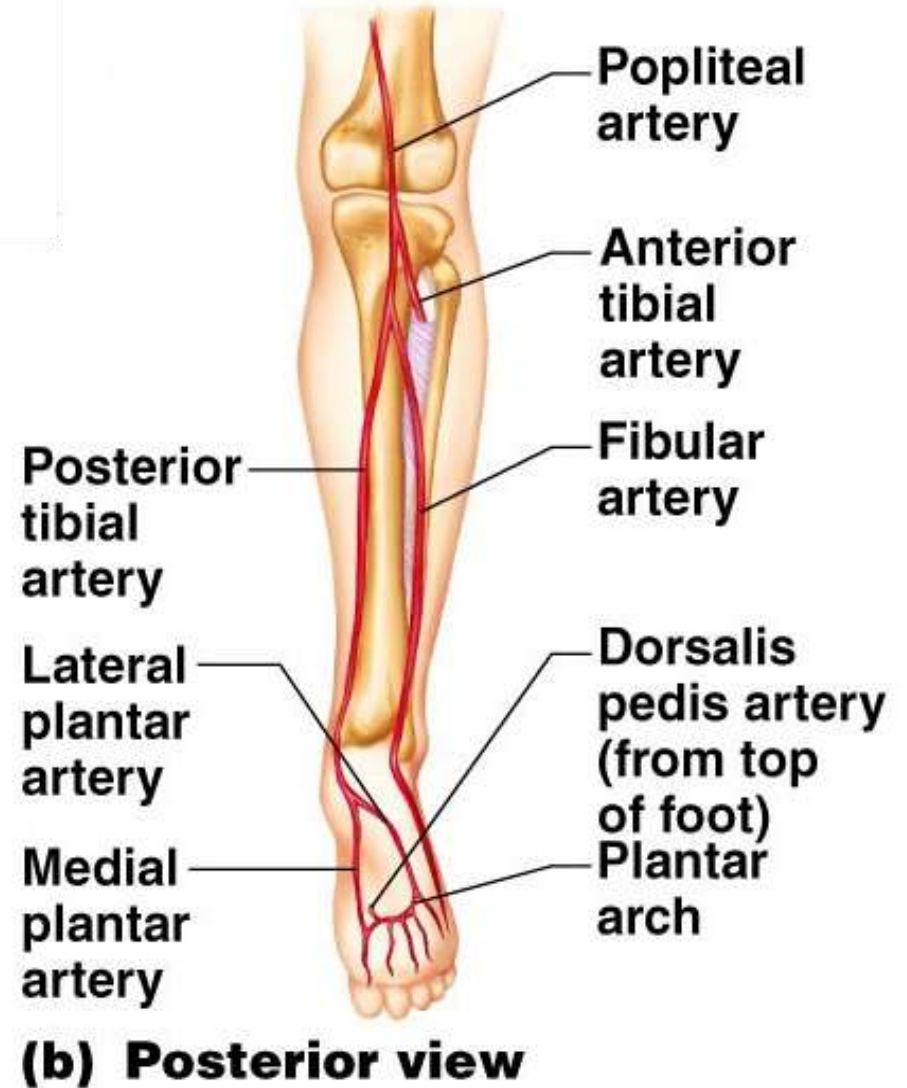
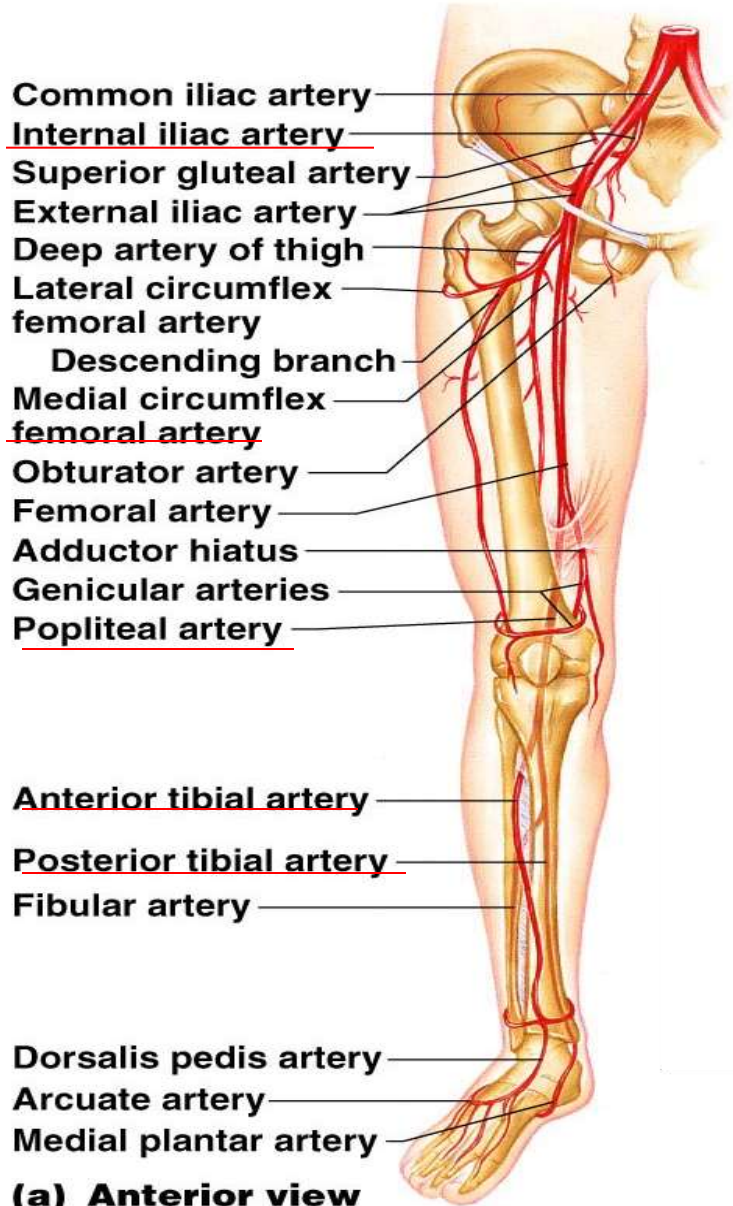


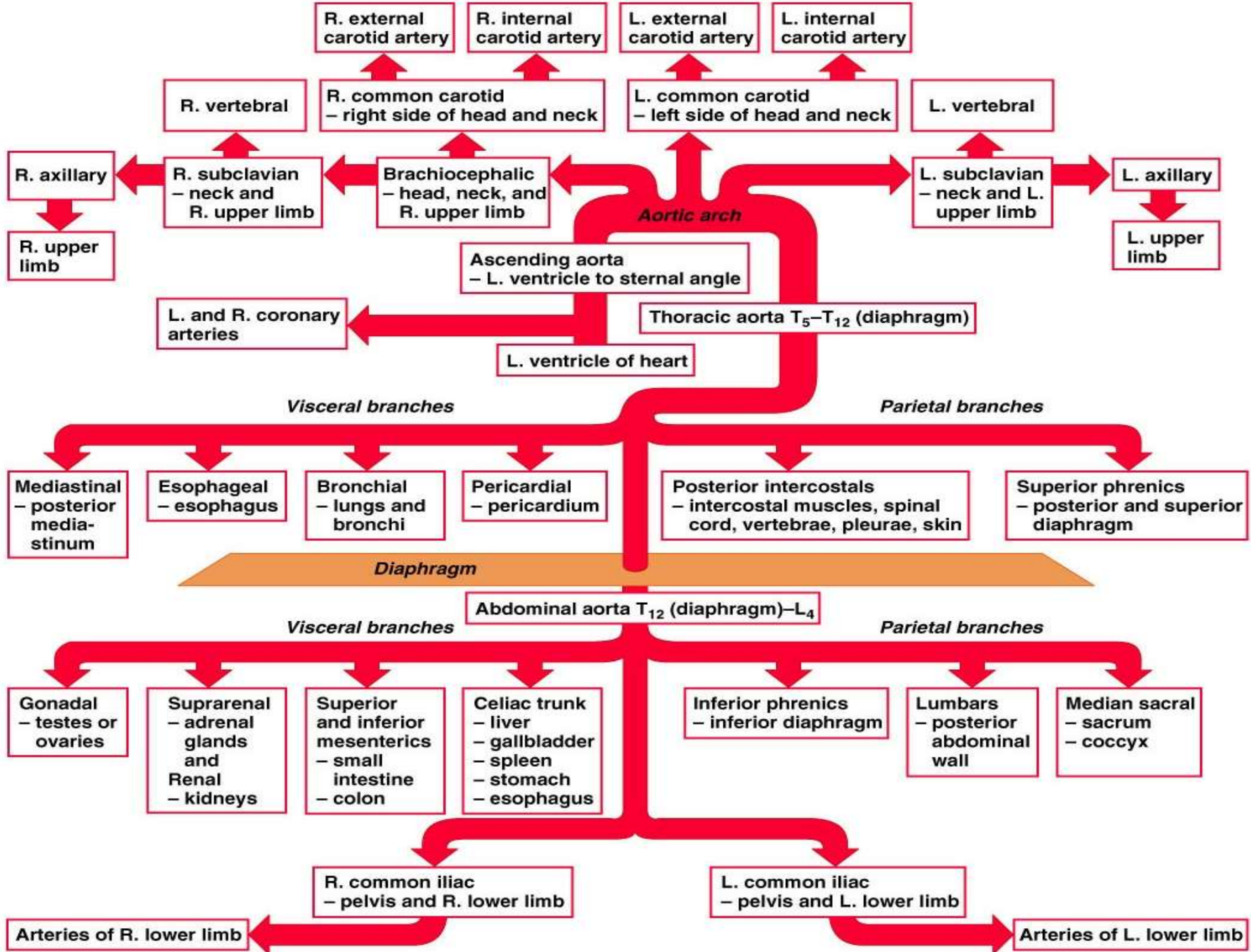
Arteries of the Pelvis and Lower Limbs

- Internal iliac arteries
- External iliac artery
- Femoral artery
- Popliteal artery
- Anterior tibial artery
- Posterior tibial artery



Arteries of the Pelvis and Lower Limbs

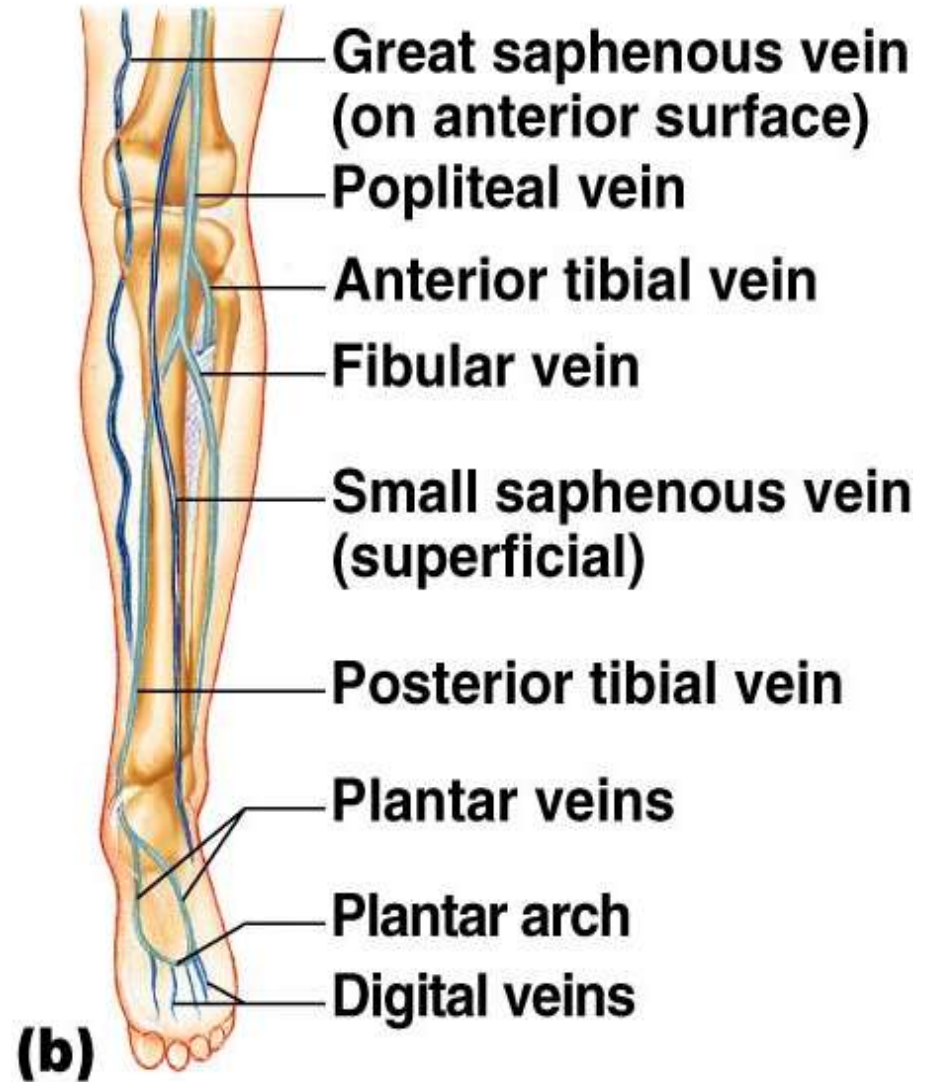
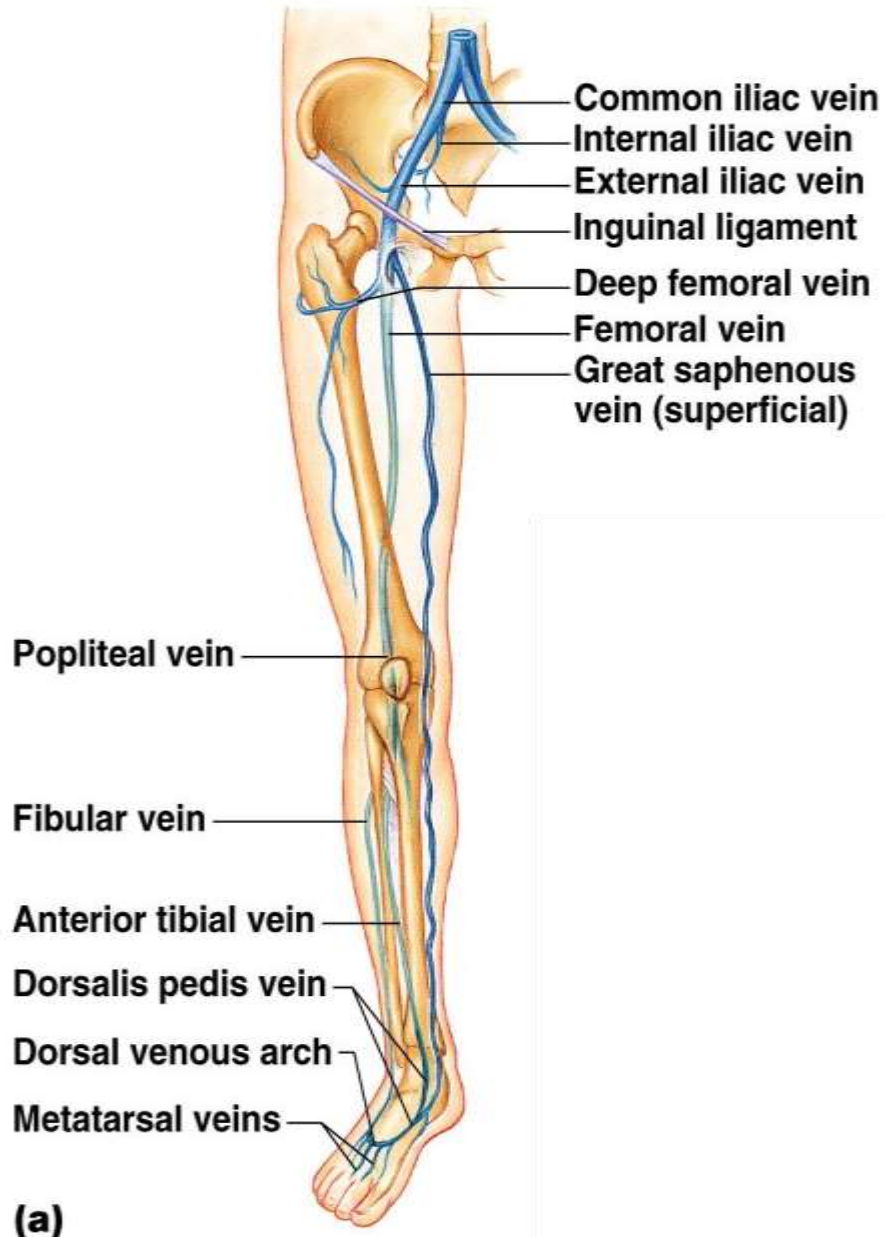


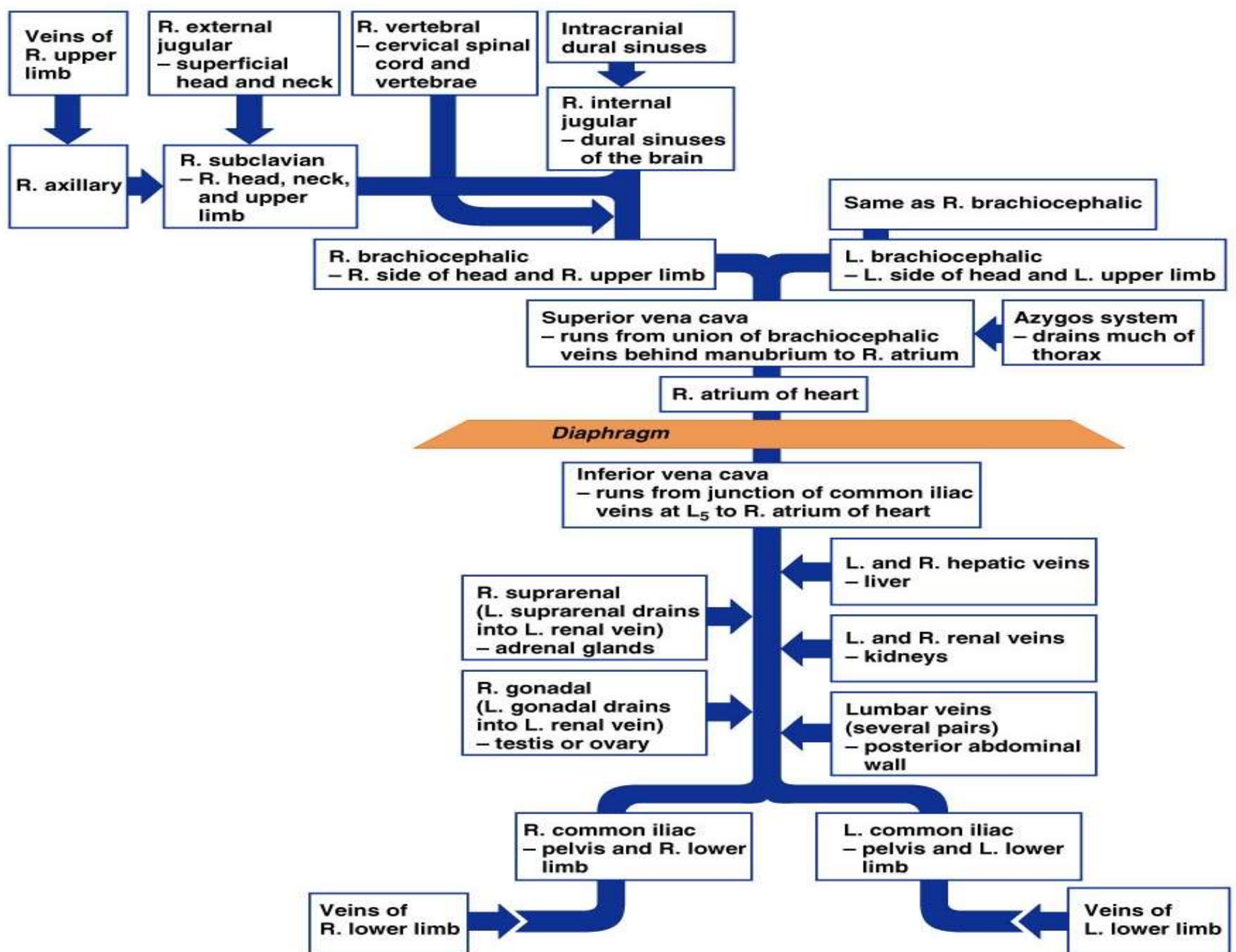


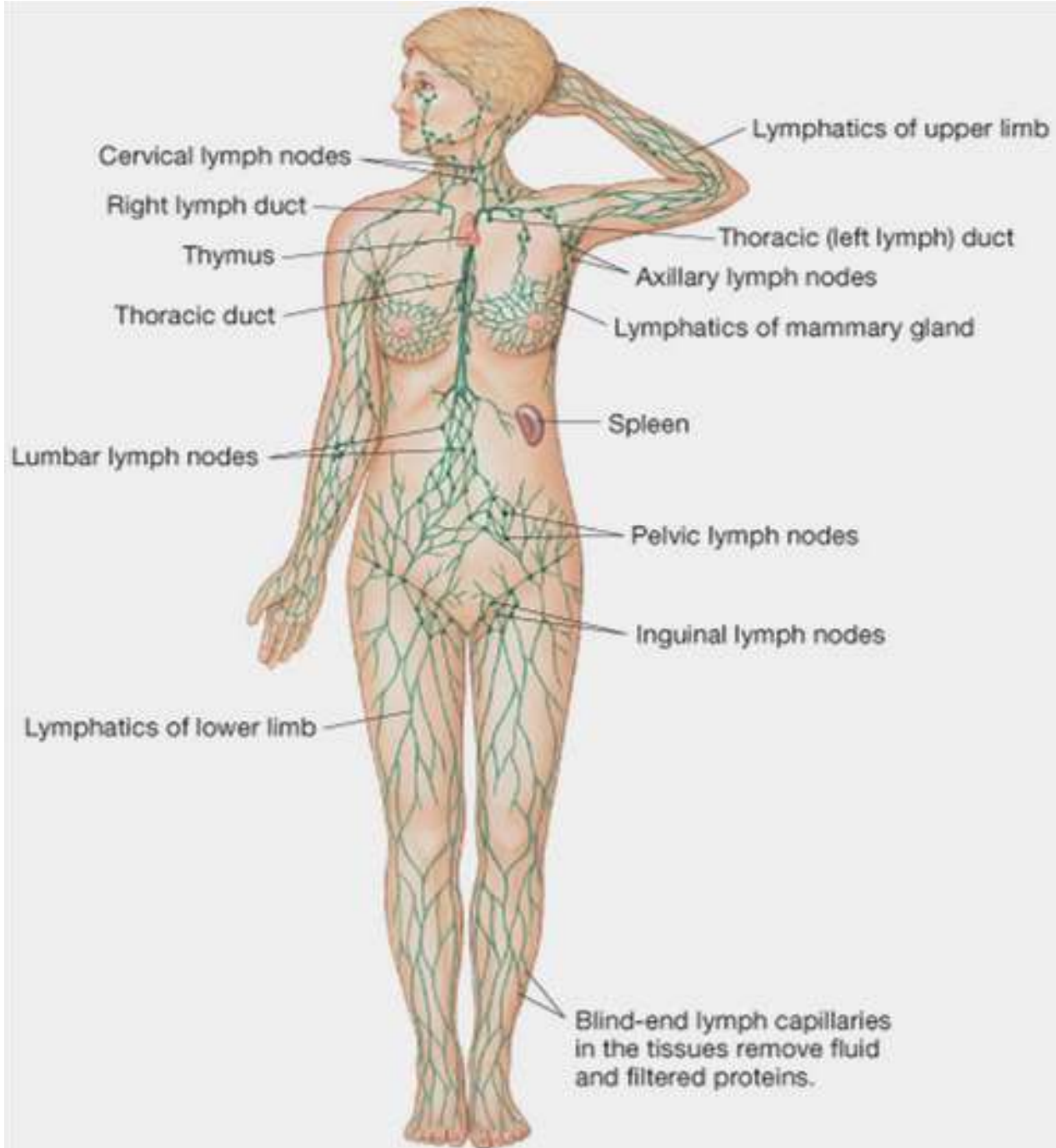
Veins of the Pelvis and Lower Limbs

- Vena Bagian Dalam
 - Nama sesuai dengan arteri
- Superficial veins
 - **Vena saphena magna** terletak disekitar vena femoralis
 - **Vena saphena parva** disebut juga vena polplitea

Veins of the Right Lower Limb and Pelvis







Lymph fluid empties into the venous circulation.

Terima kasih

