



LOBAR PNEUMONIA

GAMBARAN KLINIK

- ADALAH KERADANGAN YANG MENGENAI SEBAGIAN BESAR/SELURUH LOBUS YANG DISEBABKAN OLEH ORGANISME VIRULEN, 90 % KARENA PEUMOCOCCI JENIS 1,3,7,2
- BIASANYA MENGENAI : 30-50 THN



TERDIRI DARI 4 STADIA

1. STADIA KONGESTI :

LOBUS YANG TERKENA TAMPAK LEBIH BERAT, KEMERAHAN, ALVEOLI NAMPAK TERISI CAIRAN OEDEMA, PMN & BAKTERI, SERTA TERDAPAT BENDUNGAN PEMBULUH DARAH



2. STADIA HEPATISASI MERAH

ALVEOLI TERISI OLEH SEL DARAH MERAH, ENDAPAN FIBRIN DAN PMN

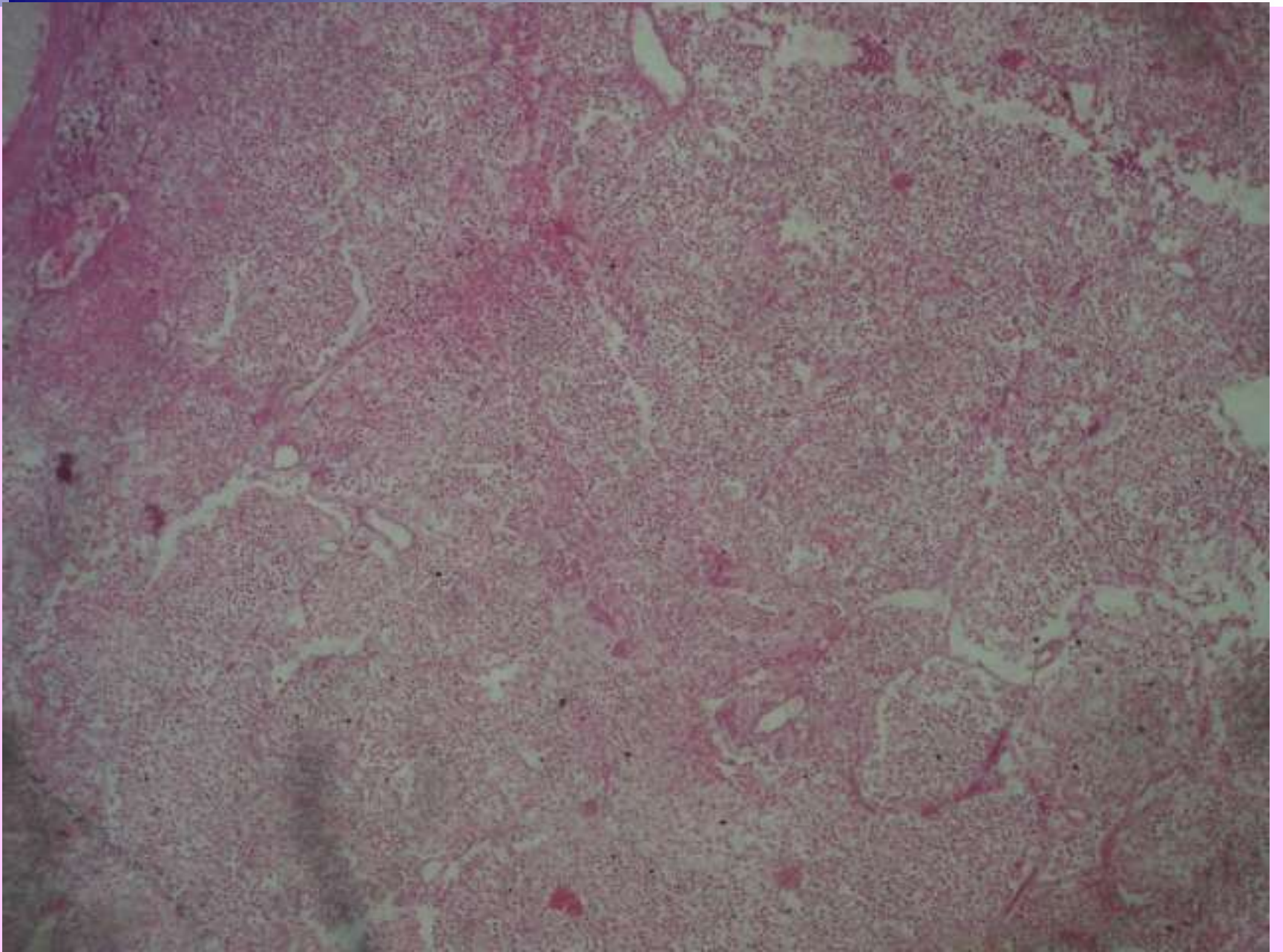


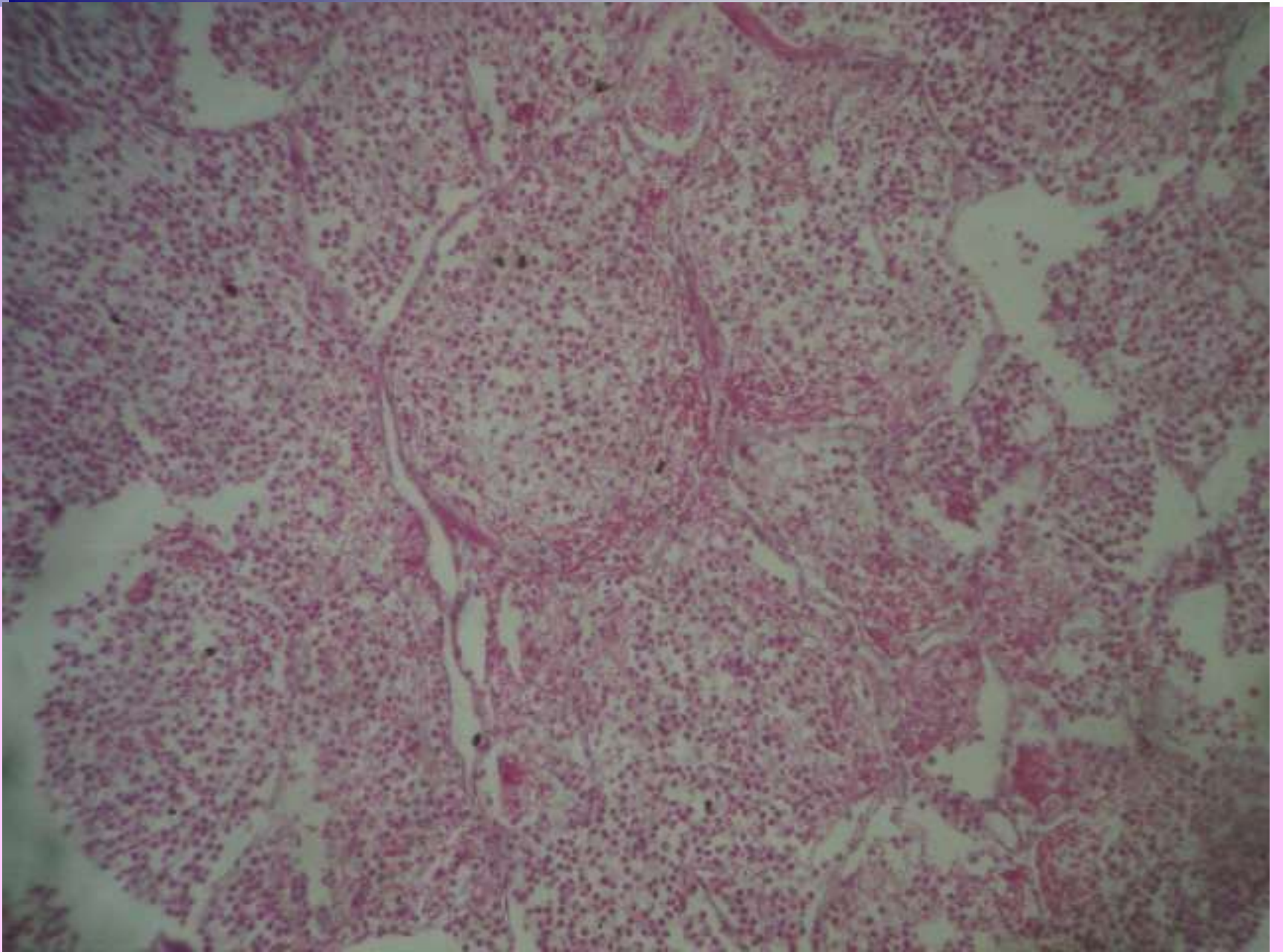
3. STADIA HEPATISASI KELABU

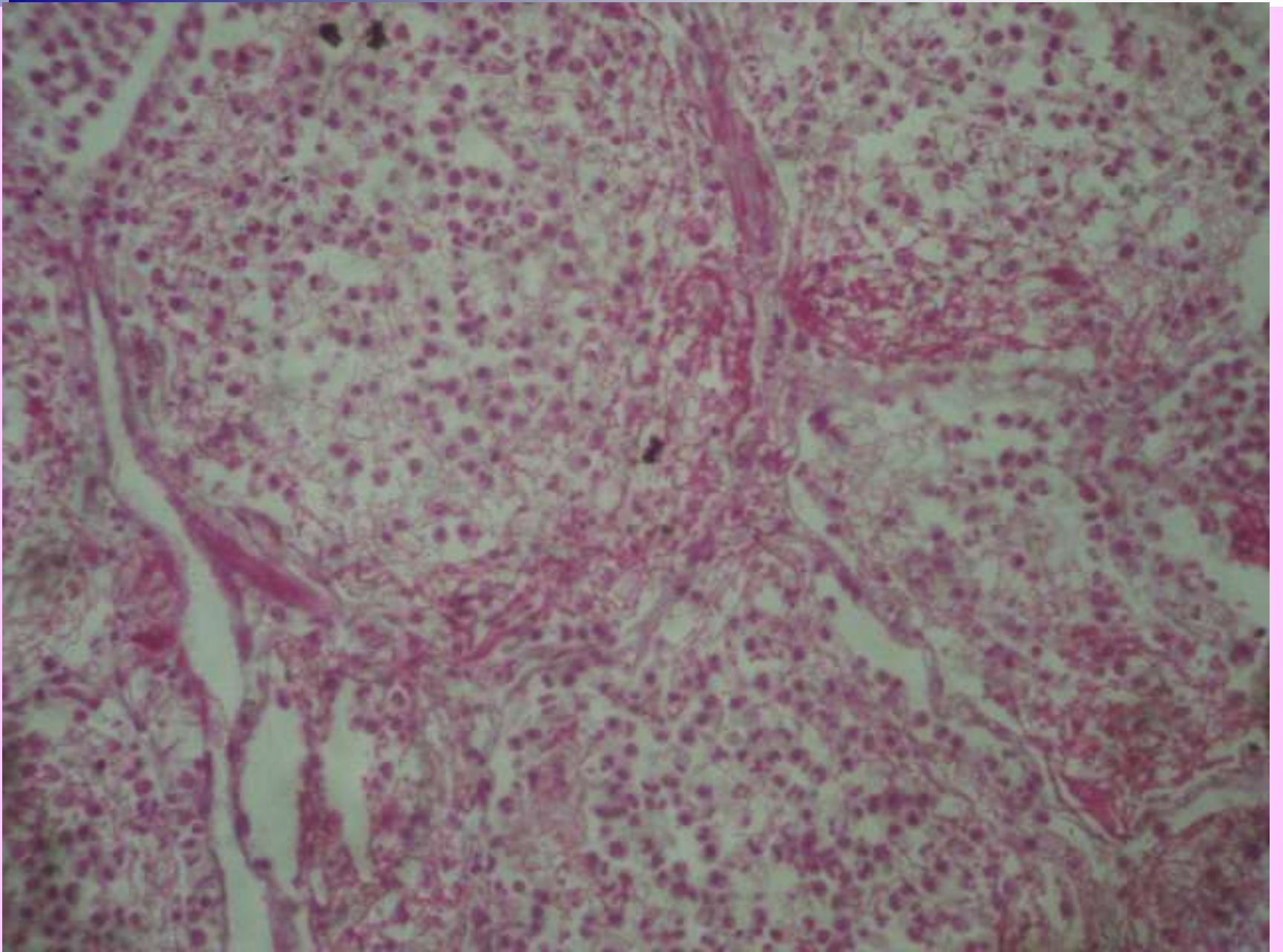
FIBRIN MULAI MENGGUMPAL &
AMORF, TIMBULAH SUATU CLEAR
ZONE PADA DINDING ALVEOLI

4. STADIA RESOLUSI

EXUDAT PADA ALVEOLI MENGALAMI KONSOLIDASI SECARA ENZYMATIK, DIRESORBSI & DIBATUKKAN, MAKROPHAG MASUK KEDALAM ALVEOLI








TBC

- Infeksi oleh bakteri, bentuk batang tahan asam (acid fast), hidupnya facultative intracellular.

Spesiesnya :

- *Mycobacterium tuberculosis*
- *Mycobacterium avium*



Penularan melalui aerosol (udara) dan makanan / minuman (susu).

Tersering menyerang paru-paru, dapat mengenai berbagai organ:

- Tractus resprii : larynx, paru, pleura, KGB.
- Tractus digestivus : usus, terutama usus halus, omentum.
- Tractus UG : ginjal, buli-buli, prostate, testis & epididymus (laki-laki), cervix, tuba & ovarium (wanita), soft tissue & CNS.

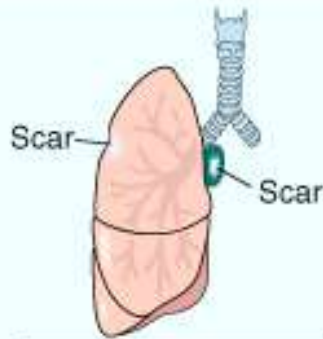
Dikenal TBC primer dan TBC sekunder (lihat diagram).

INCREASING IMMUNITY

Localized lesions, more caseation

Spreading lesions, little caseation

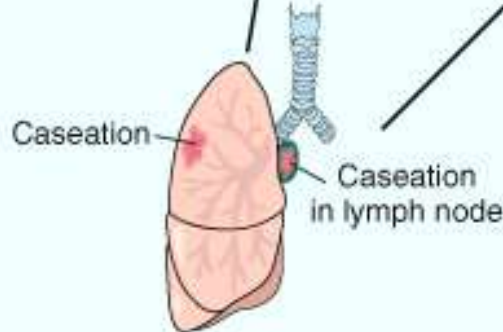
Primary infection



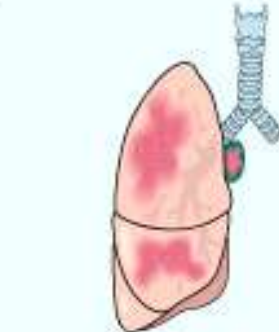
HEALED LESIONS
(organisms not viable)

LATENT LESIONS
(organisms dormant;
pulmonary or extrapulmonary)

LOCALIZED CASEATING
DESTRUCTIVE LESIONS
(pulmonary or extrapulmonary)



PRIMARY COMPLEX
(localized caseation)

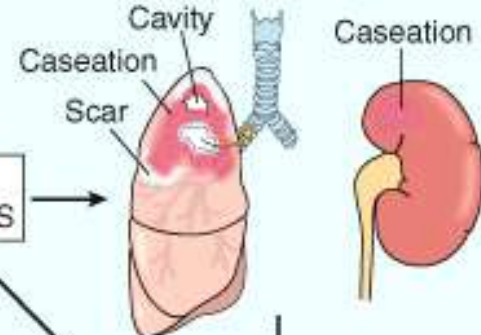


PROGRESSIVE PRIMARY TB

Reactivation

Reinfection

SECONDARY TUBERCULOSIS



PROGRESSIVE SECONDARY TB

Massive hematogenous dissemination

Massive hematogenous dissemination



MILIARY TB

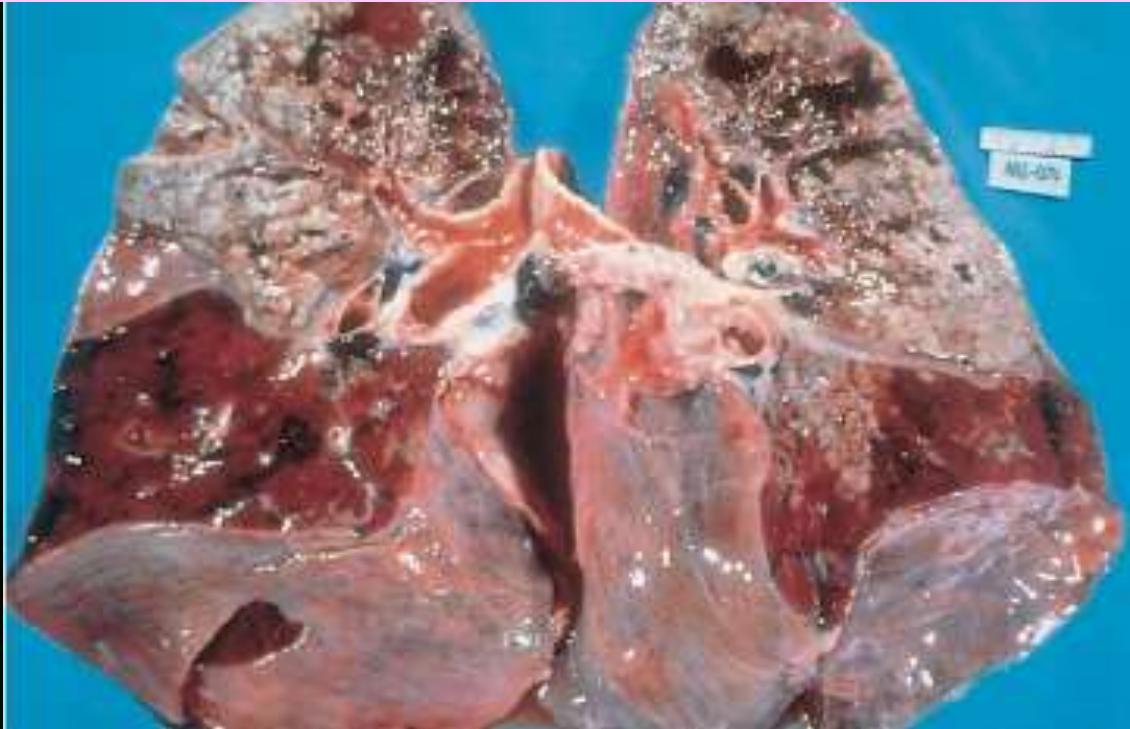
MILIARY TB


Weeks

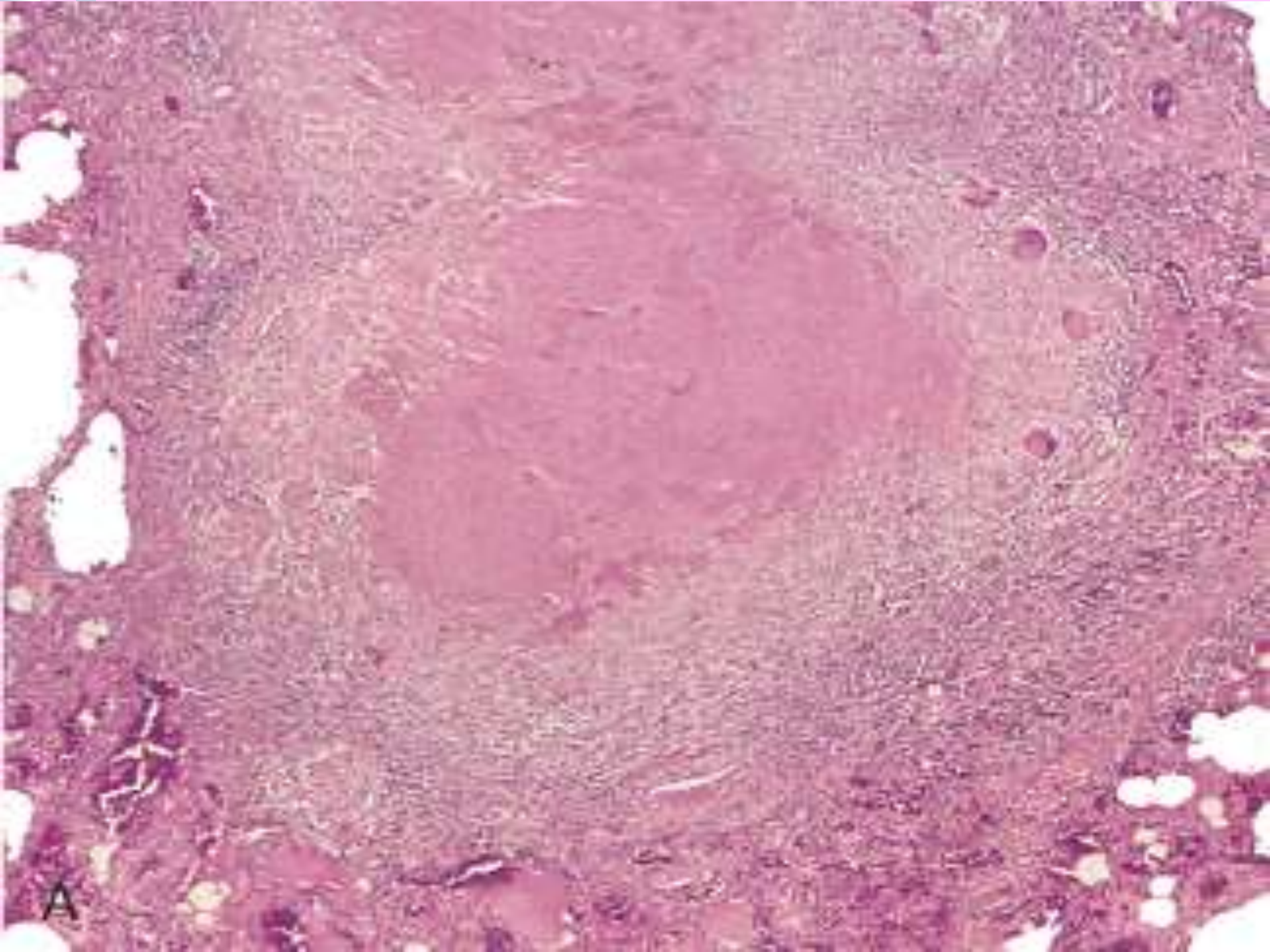
Years

TIME

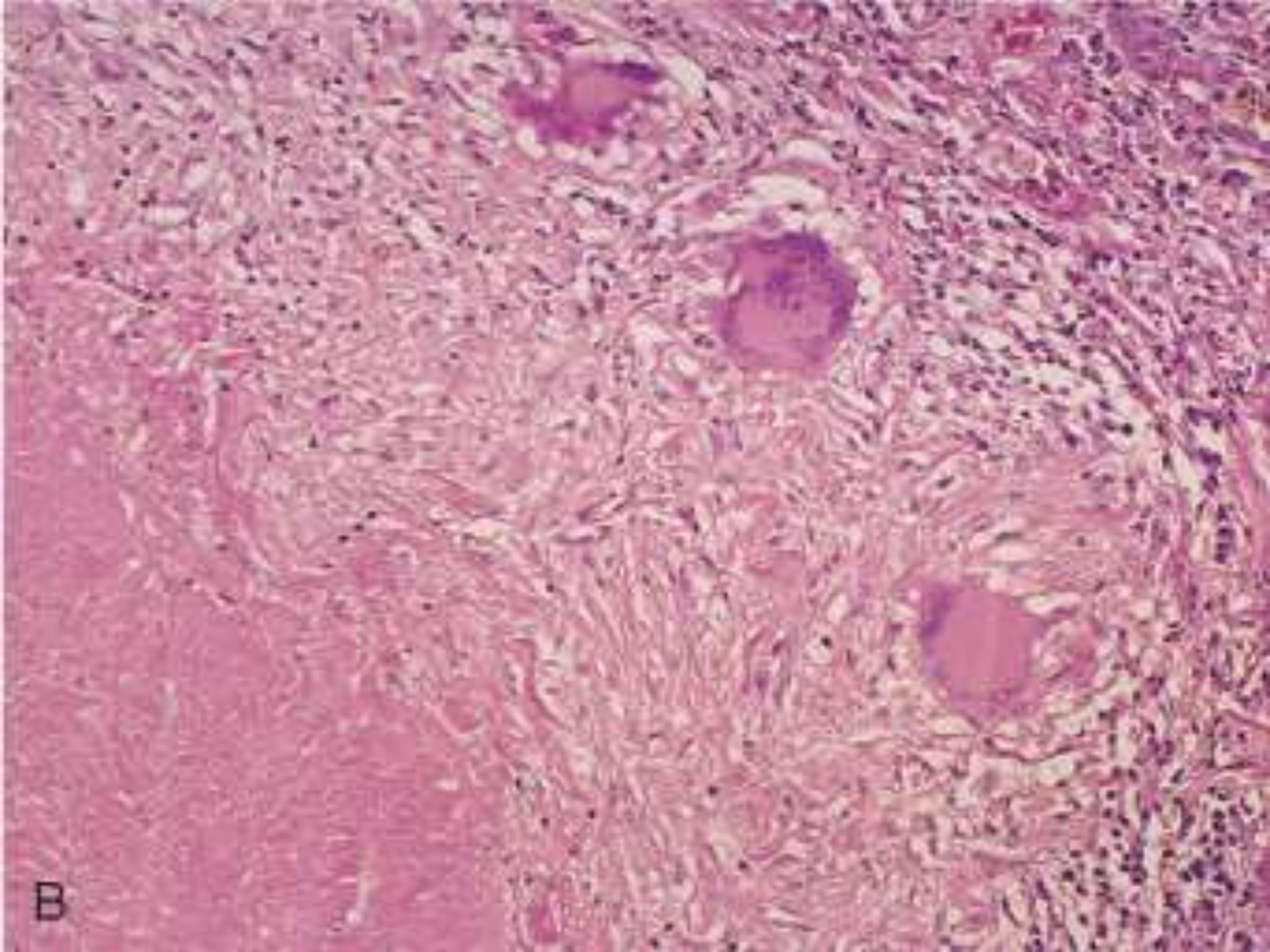
Gambaran makroskopik



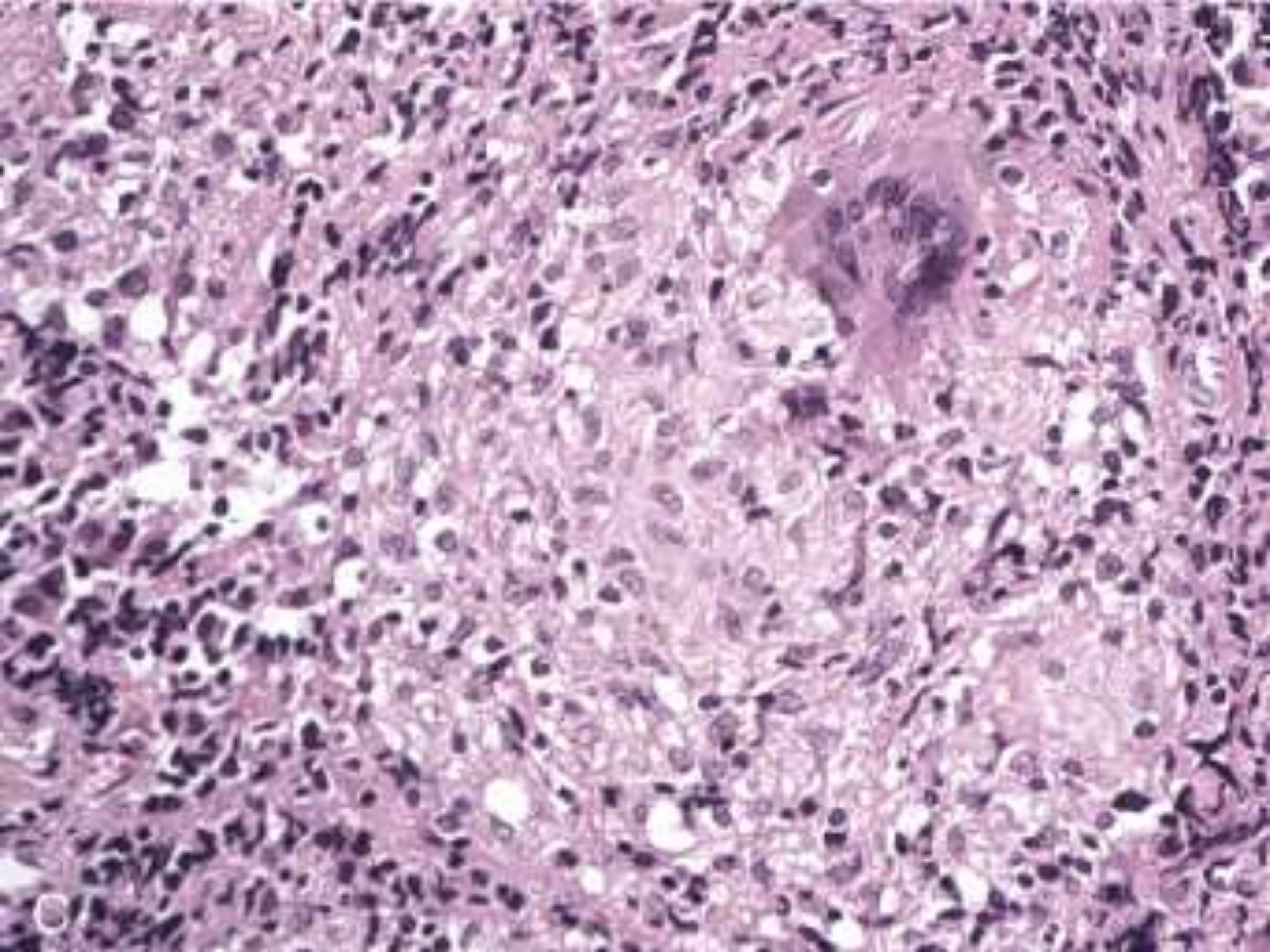
- 
- Gambaran Mikroskopik : **Tubercle**
 - Berupa sel-sel pipih epitheloid dikelilingi sel radang lymphosit dan Giant cell Langhans serta central necrosis caseosa (+/-).



A



B

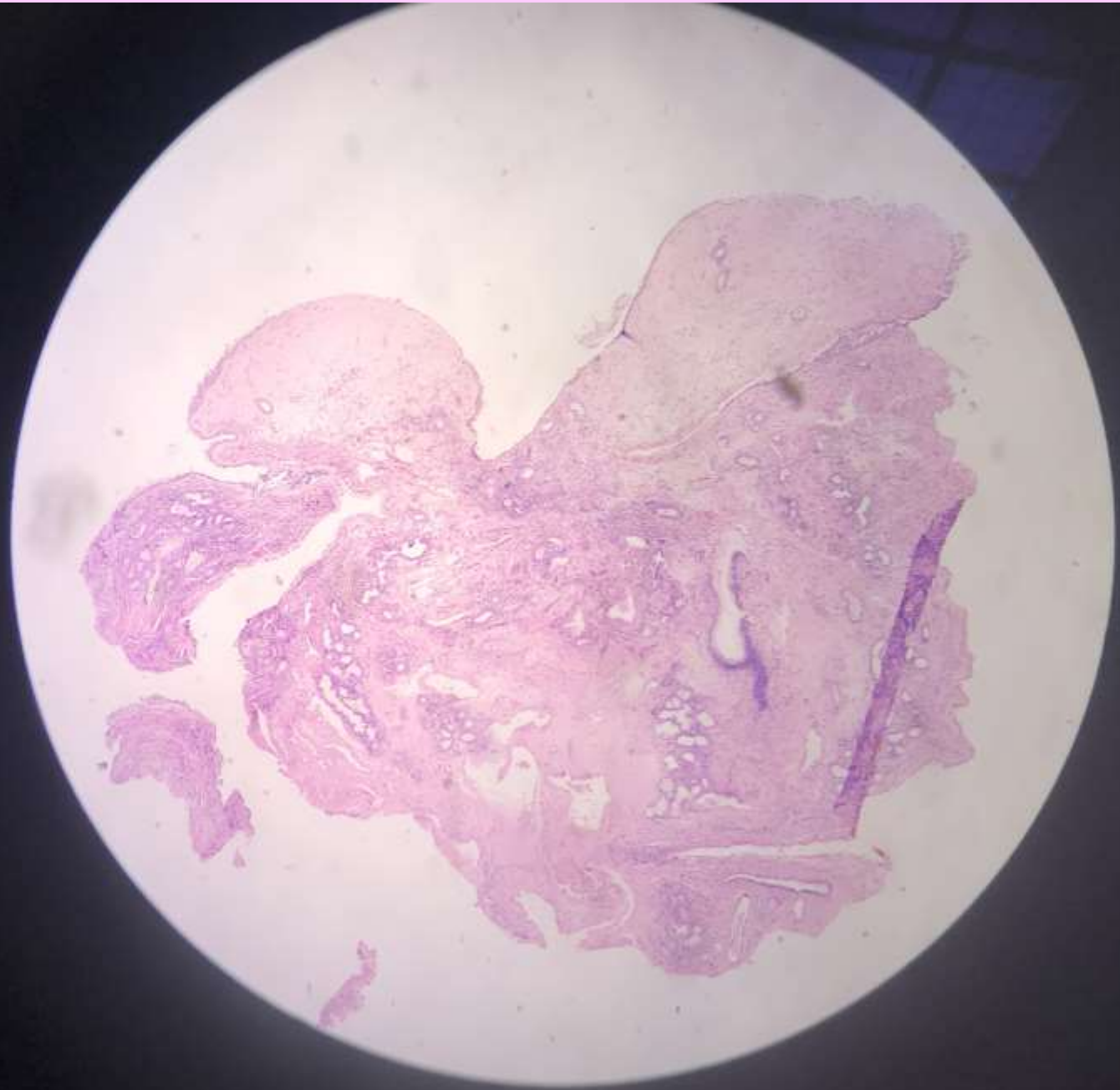


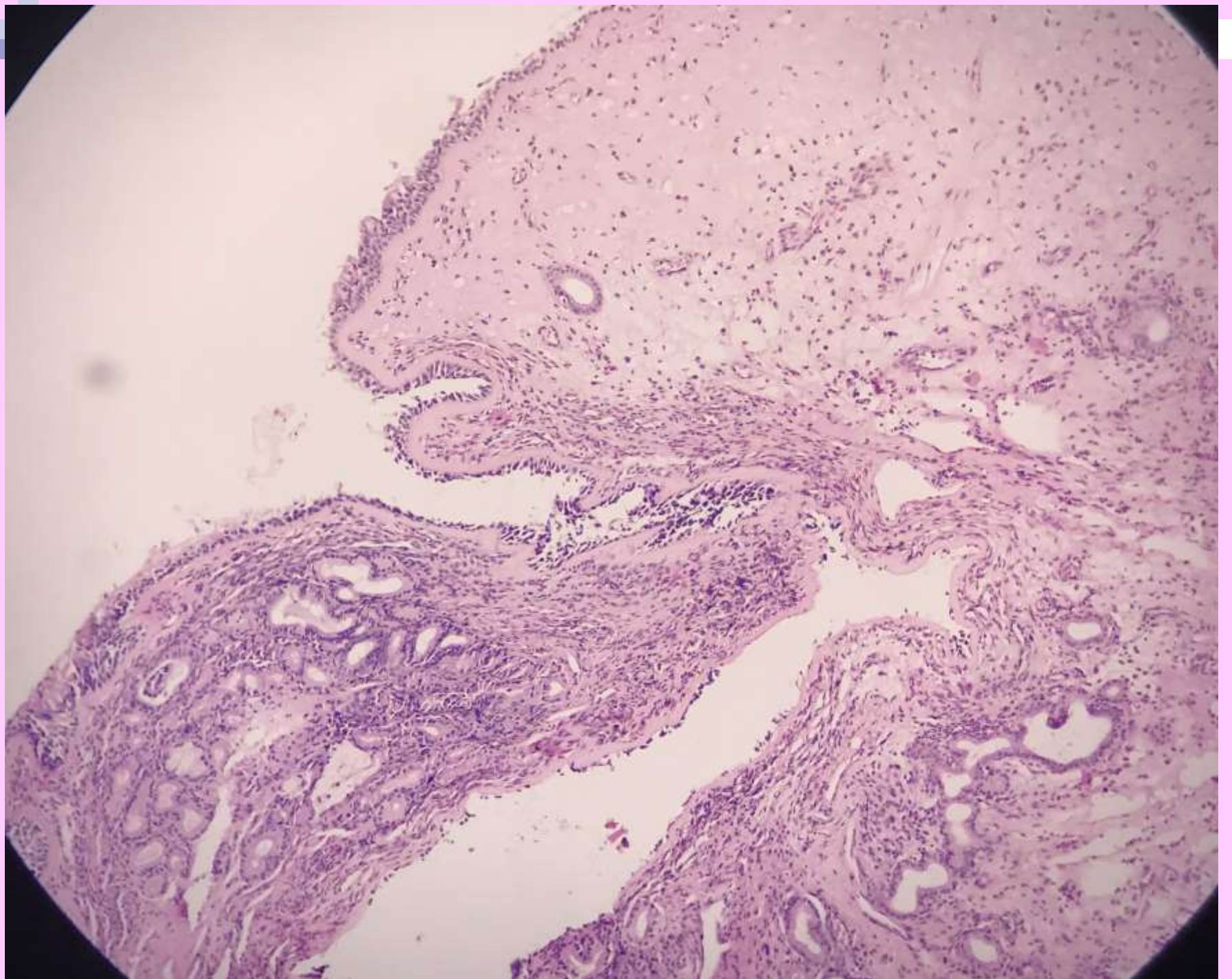


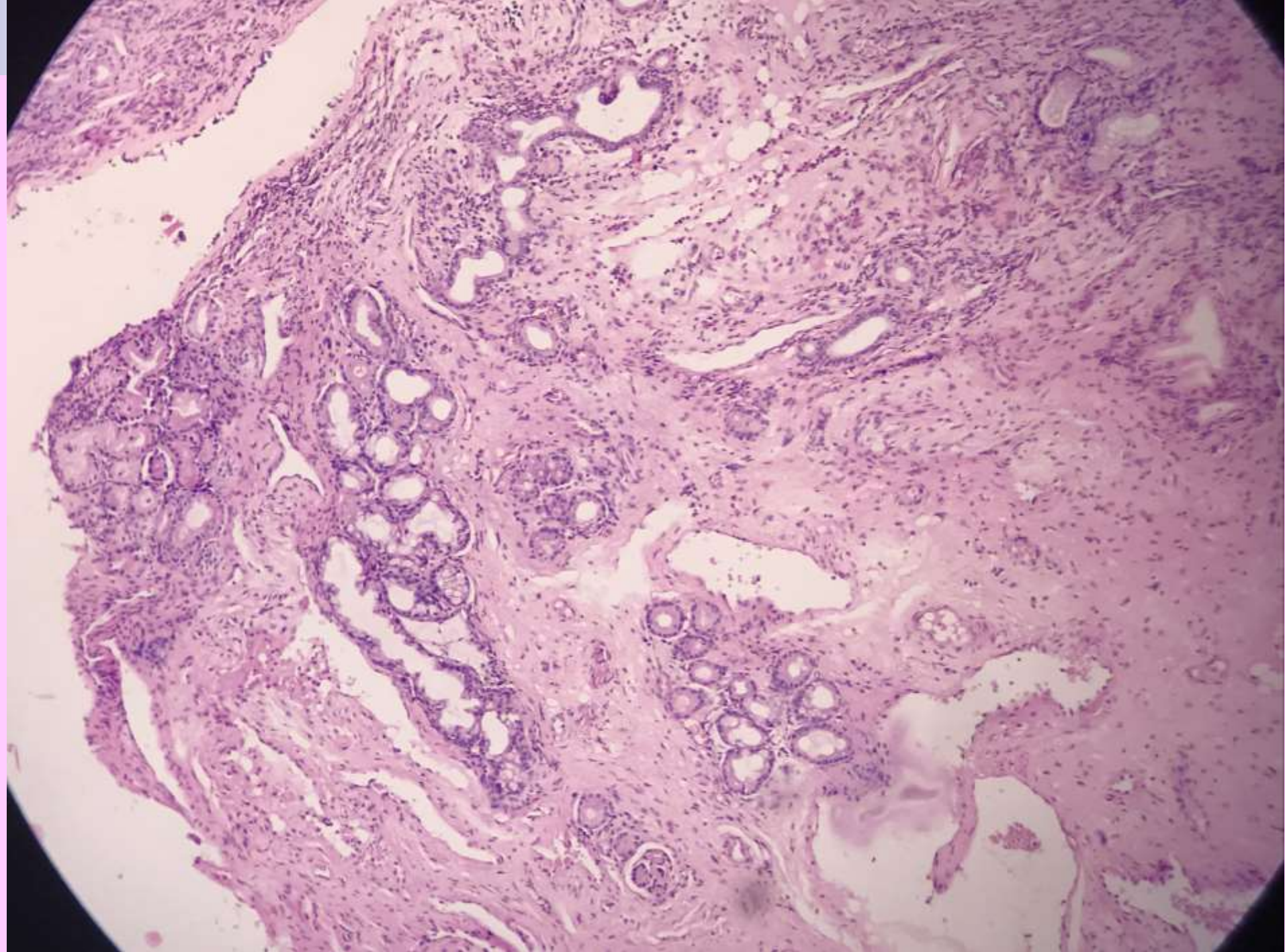
Sinonasal papiloma

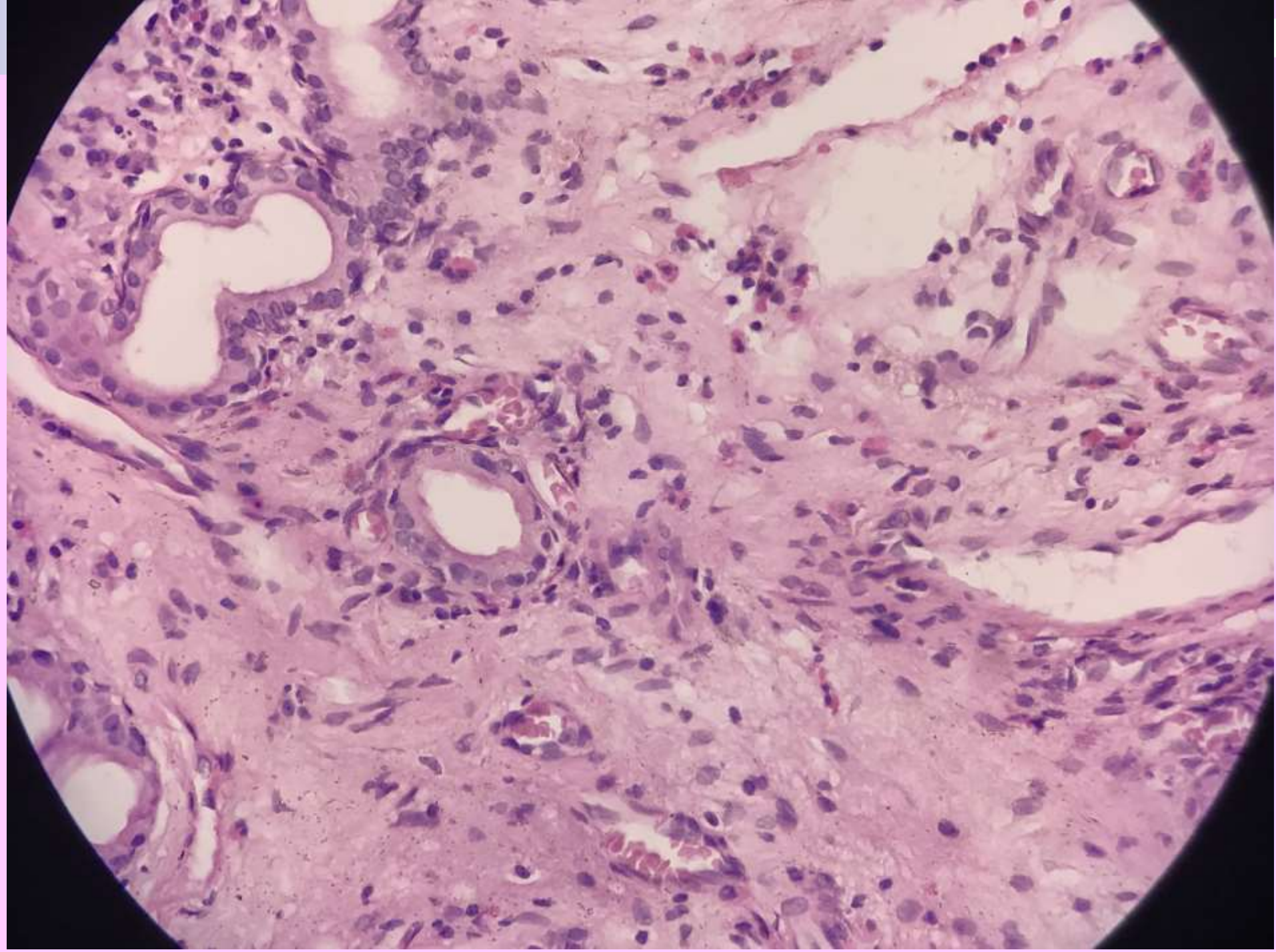
■ Inflammatory papilloma

- Sering didapatkan pada allergic polyp
- Not true neoplasma
- Makroskopis : bentuk polypoid di cavum nasi atau sinus
- Mikroskopis :









Inverted papiloma

